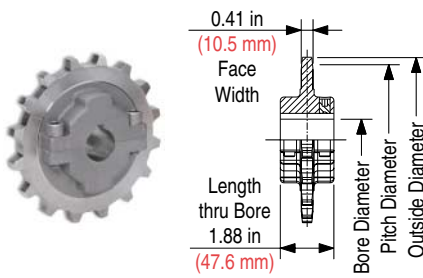


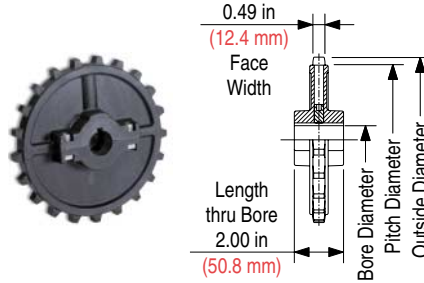




**SSS7700 Stainless Steel Split Sprocket**



**NS7700 Thermoplastic Split Sprocket**



**SSS7700 Stainless Steel Split Sprocket Information**

Number of Teeth		Pitch Diameter		Outside Diameter		Bore Diameter (Shaft-Ready)								Bore Diameter (Round)				Approximate Weight			
						Round				Square				in		mm					
						in	mm	in	mm	in	mm	in	mm	min	max	min	max			min	max
actual	effect	in	mm	in	mm	min	max	min	max	min	max	min	max	min	max	min	max	min	max	lbs	kg
16	16	5.126	130.20	5.14	130.6	1	2	25	50	1	1	25	25	3/4	2	19	50	3.50	1.59		
18	18	5.759	146.28	5.78	146.8	1	2	25	50	1	1	25	25	3/4	2	19	50	5.00	2.27		
21	21	6.710	170.43	6.72	170.7	1	2-1/2	25	60	1	3-1/2	25	90	3/4	3-1/2	19	60	6.00	2.72		

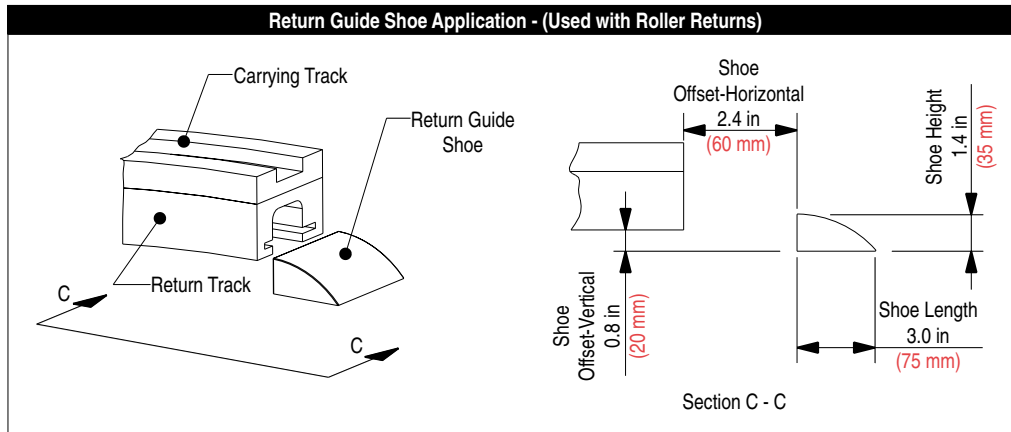
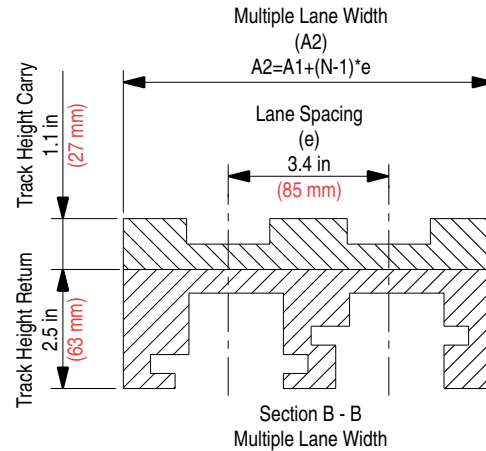
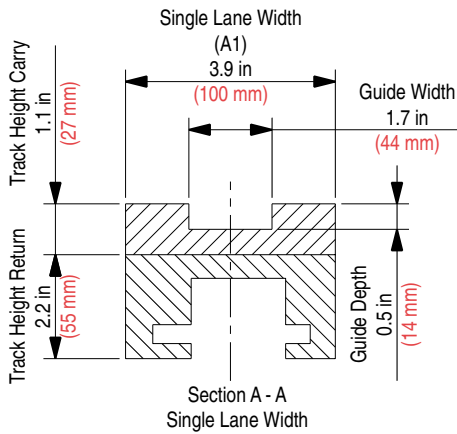
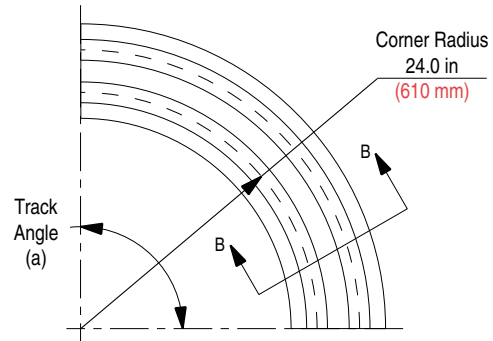
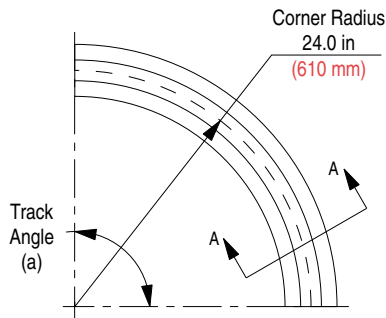
Shaft-ready round bores are shipped with keyway and setscrews. Metric shaft-ready round bores are shipped with metric hardware, but without setscrews.

**NS7700 Thermoplastic Split Sprocket Information**

Number of Teeth		Pitch Diameter		Outside Diameter		Bore Diameter (Shaft-Ready)								Bore Diameter (Idler)				Approximate Weight			
						Round				Square				in		mm					
						in	mm	in	mm	in	mm	in	mm	min	max	min	max			min	max
actual	effect	in	mm	in	mm	min	max	min	max	min	max	min	max	min	max	min	max	min	max	lbs	kg
16	16	5.126	130.20	5.14	130.6	1	1-5/8	25	40	-	-	-	-	1	1-5/8	25	40	0.73	0.33		
18	18	5.759	146.28	5.78	146.8	1	1-5/8	25	40	-	-	-	-	1	1-5/8	25	40	0.84	0.38		
21	21	6.710	170.43	6.72	170.7	1	2-1/2	25	60	1	3-1/2	25	90	1	2-1/2	25	60	0.97	0.44		
31	31	9.885	251.08	9.93	252.2	1	3-1/2	25	90	1	4-1/2	25	120	1	3-1/2	25	90	3.72	1.69		

Shaft-ready round bores are shipped with keyway and setscrews. Metric shaft-ready round bores are shipped with metric hardware, but without setscrews. Idler bores are designed to spin freely on the shaft without keyway or setscrews.

### Corner Track (Magnetic)



Corner track number supplied as carry, return and guide shoe.

All magnetic corner tracks are molded in UHMWPE (black) material and are available on a made-to-order basis.

Corner Track Number	Multiple Lane Width (A2)		Track Angle (a)	Number of Lanes (N)	Corner Track Number	Multiple Lane Width (A2)		Track Angle (a)	Number of Lanes (N)	Corner Track Number	Multiple Lane Width (A2)		Track Angle (a)	Number of Lanes (N)	Approximate Weight		
	in	mm				in	mm				in	mm			lbs	kg	
604.48.16	-	-	15°	1	604.48.45	-	-	45°	1	604.48.76	-	-	75°	1	-	-	
604.48.17	7.3	185		2	604.48.46	7.3	185		2	604.48.77	7.3	185		2	-	-	-
604.48.18	10.6	270		3	604.48.47	10.6	270		3	604.48.78	10.6	270		3	-	-	-
604.48.19	14.0	355		4	604.48.48	14.0	355		4	604.48.79	14.0	355		4	-	-	-
604.48.20	17.3	440		5	604.48.49	17.3	440		5	604.48.80	17.3	440		5	-	-	-
604.48.21	20.7	525		6	604.48.50	20.7	525		6	604.48.81	20.7	525		6	-	-	-
604.48.31	-	-	30°	1	604.48.61	-	-	60°	1	604.48.01	-	-	90°	1	20.11	9.12	
604.48.32	7.3	185		2	604.48.62	7.3	185		2	604.48.02	7.3	185		2	40.72	18.47	
604.48.33	10.6	270		3	604.48.63	10.6	270		3	604.48.03	10.6	270		3	59.45	26.97	
604.48.34	14.0	355		4	604.48.64	14.0	355		4	604.48.04	14.0	355		4	78.19	35.47	
604.48.35	17.3	440		5	604.48.65	17.3	440		5	604.48.05	17.3	440		5	96.87	43.94	
604.48.36	20.7	525		6	604.48.66	20.7	525		6	604.48.06	20.7	525		6	115.60	52.44	