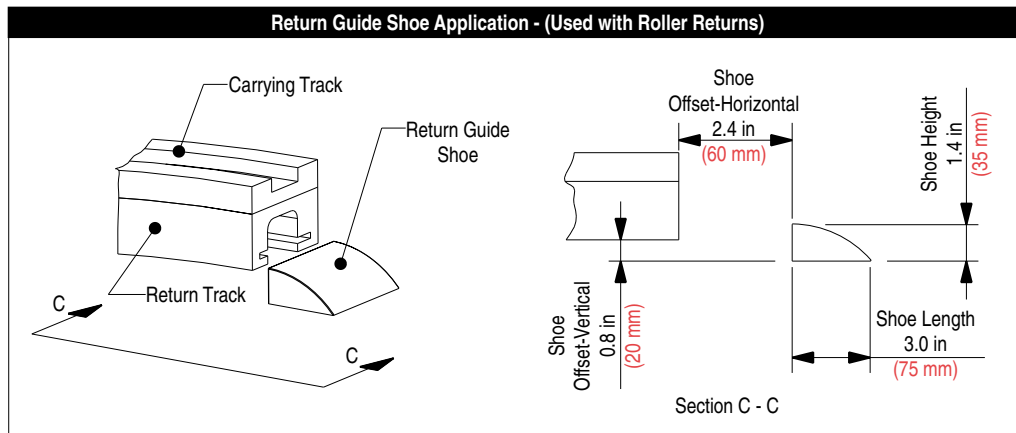
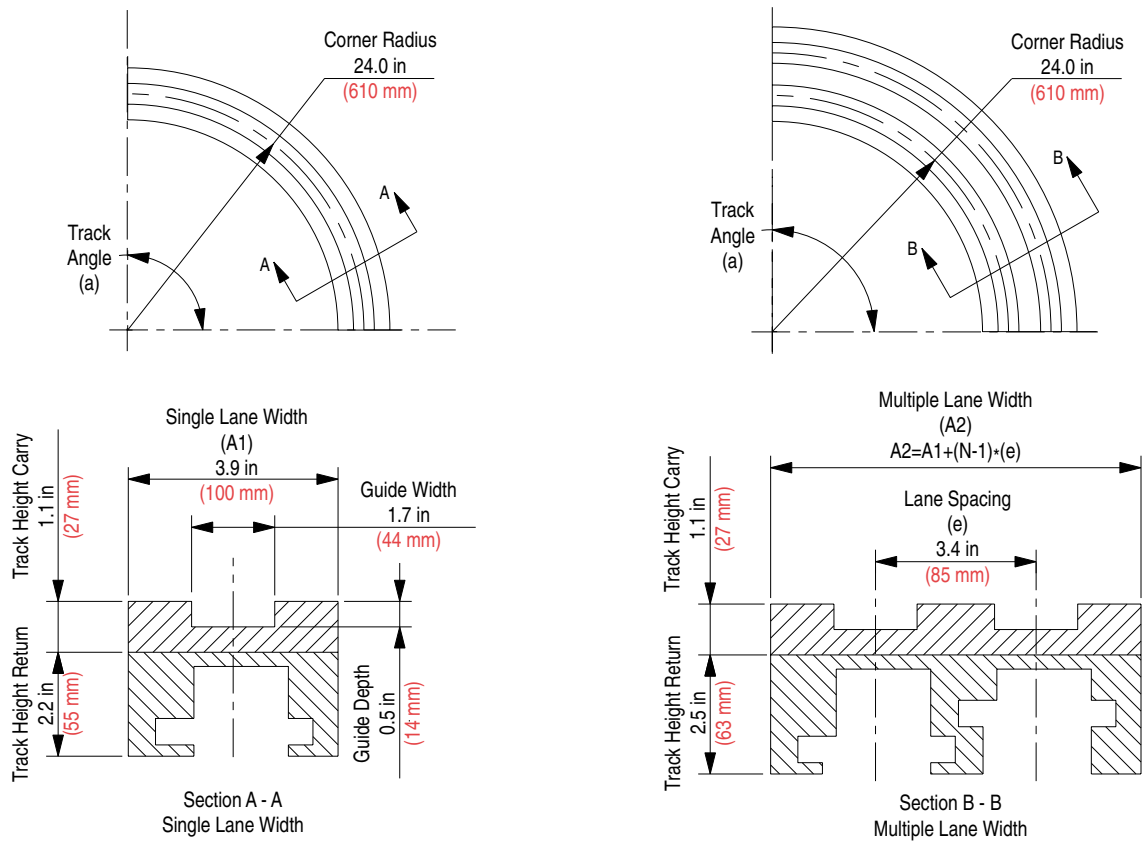


Corner Track (Magnetic)



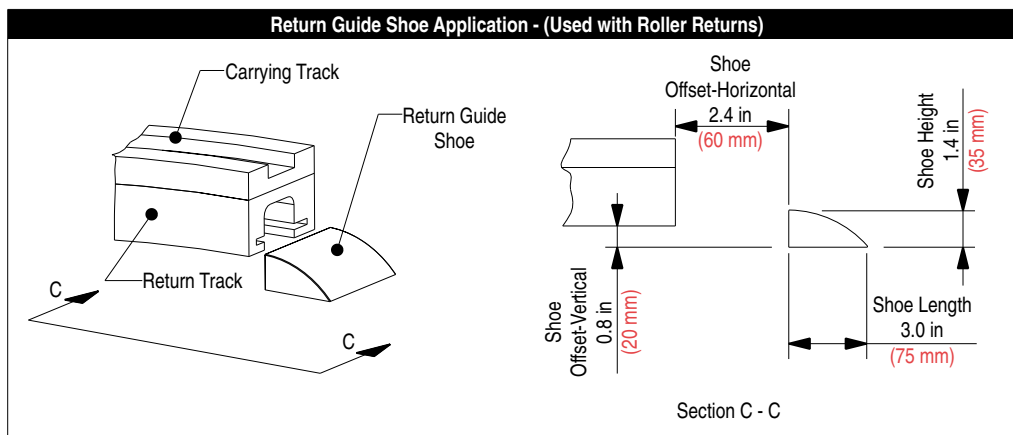
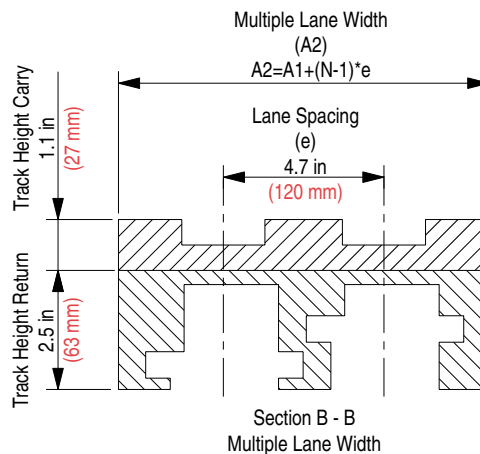
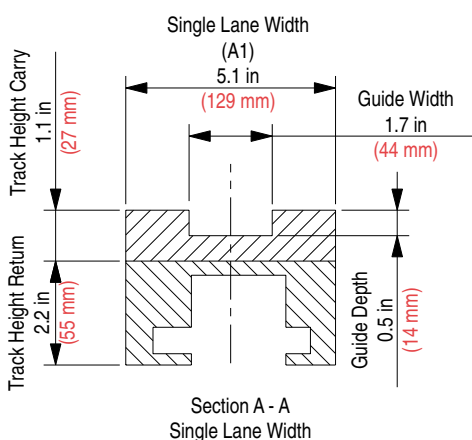
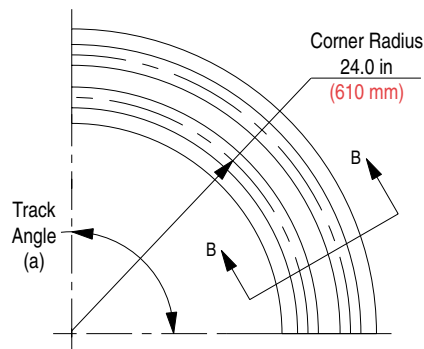
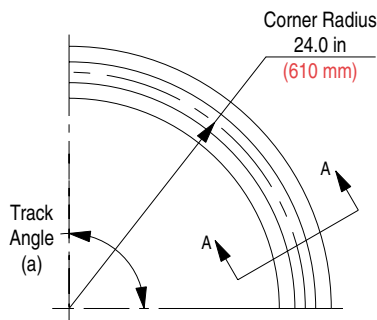
Corner track number supplied as carry, return and guide shoe.

All magnetic corner tracks are molded in UHMWPE (black) material and are available on a made-to-order basis.

For 84 MM (3.31 in) chain only.

Corner Track Number	Multiple Lane Width (A2)		Track Angle (a)	Number of Lanes (N)	Corner Track Number	Multiple Lane Width (A2)		Track Angle (a)	Number of Lanes (N)	Corner Track Number	Multiple Lane Width (A2)		Track Angle (a)	Number of Lanes (N)	Approximate Weight	
	in	mm				in	mm				in	mm			lbs	kg
614.48.16	-	-	15°	1	614.48.45	-	-	45°	1	614.48.76	-	-	75°	1	-	-
614.48.17	7.3	185		2	614.48.46	7.3	185		2	614.48.77	7.3	185		2	-	-
614.48.18	10.6	270		3	614.48.47	10.6	270		3	614.48.78	10.6	270		3	-	-
614.48.19	14.0	355		4	614.48.48	14.0	355		4	614.48.79	14.0	355		4	-	-
614.48.20	17.3	440		5	614.48.49	17.3	440		5	614.48.80	17.3	440		5	-	-
614.48.21	20.7	525		6	614.48.50	20.7	525		6	614.48.81	20.7	525		6	-	-
614.48.31	-	-	30°	1	614.48.61	-	-	60°	1	614.48.01	-	-	90°	1	20.11	9.12
614.48.32	7.3	185		2	614.48.62	7.3	185		2	614.48.02	7.3	185		2	40.72	18.47
614.48.33	10.6	270		3	614.48.63	10.6	270		3	614.48.03	10.6	270		3	59.45	26.97
614.48.34	14.0	355		4	614.48.64	14.0	355		4	614.48.04	14.0	355		4	78.19	35.47
614.48.35	17.3	440		5	614.48.65	17.3	440		5	614.48.05	17.3	440		5	96.87	43.94
614.48.36	20.7	525		6	614.48.66	20.7	525		6	614.48.06	20.7	525		6	115.60	52.44

Corner Track (Magnetic)



Corner track number supplied as carry, return and guide shoe.

All magnetic corner tracks are molded in UHMWPE (black) material and are available on a made-to-order basis.

For 4-1/2 in (114.0 mm) chain only.

Corner Track Number	Multiple Lane Width (A2)		Track Angle (a)	Number of Lanes (N)	Corner Track Number	Multiple Lane Width (A2)		Track Angle (a)	Number of Lanes (N)	Corner Track Number	Multiple Lane Width (A2)		Track Angle (a)	Number of Lanes (N)	Approximate Weight	
	in	mm				in	mm				in	mm			lbs	kg
604.38.16	-	-	15°	1	604.38.45	-	-	45°	1	604.38.76	-	-	75°	1	-	-
604.38.17	9.80	249		2	604.38.46	9.80	249		2	604.38.77	9.80	249		2	-	-
604.38.18	14.52	369		3	604.38.47	14.52	369		3	604.38.78	14.52	369		3	-	-
604.38.19	19.25	489		4	604.38.48	19.25	489		4	604.38.79	19.25	489		4	-	-
604.38.20	23.98	609		5	604.38.49	23.98	609		5	604.38.80	23.98	609		5	-	-
604.38.21	28.70	729		6	604.38.50	28.70	729		6	604.38.81	28.70	729		6	-	-
604.38.31	-	-	30°	1	604.38.61	-	-	60°	1	604.38.01	-	-	90°	1	25.92	11.76
604.38.32	9.80	249		2	604.38.62	9.80	249		2	604.38.02	9.80	249		2	54.81	24.86
604.38.33	14.52	369		3	604.38.63	14.52	369		3	604.38.03	14.52	369		3	81.21	36.84
604.38.34	19.25	489		4	604.38.64	19.25	489		4	604.38.04	19.25	489		4	107.66	48.83
604.38.35	23.98	609		5	604.38.65	23.98	609		5	604.38.05	23.98	609		5	134.11	60.83
604.38.36	28.70	729		6	604.38.66	28.70	729		6	604.38.06	28.70	729		6	160.51	72.81