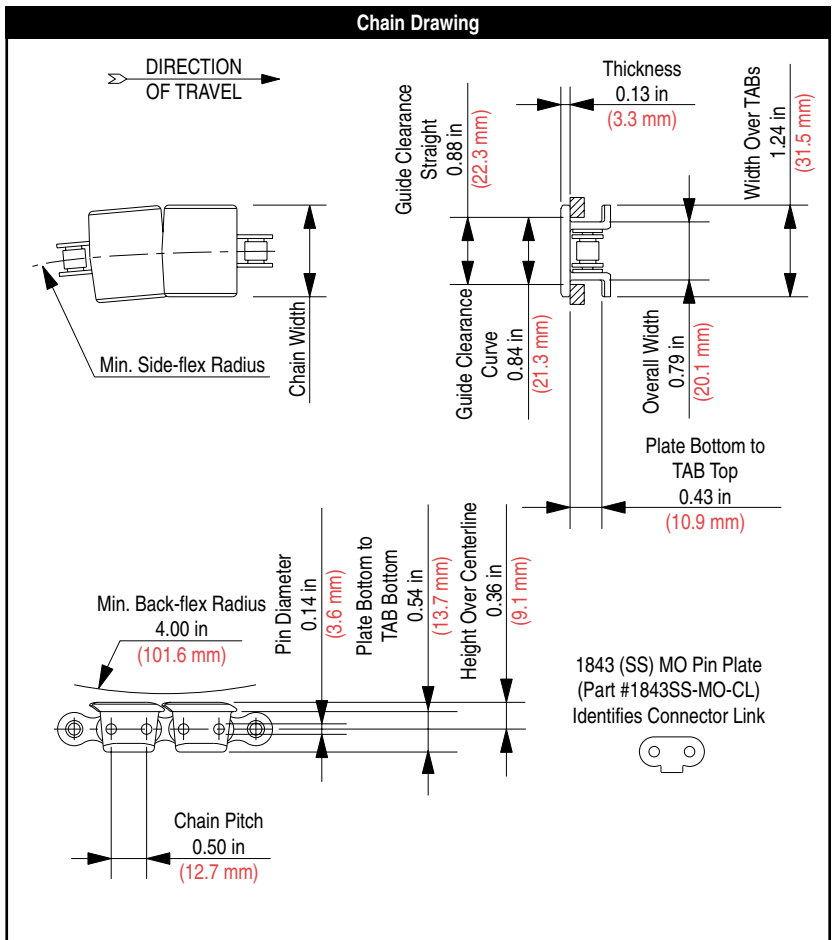


Chain is shown with Low Friction (LF) top plates on Stainless Steel (SS) base chain.



Chain Information

desc	Chain Width		Min. Side-flex Radius		Approximate Weight	
	in	mm	in	mm	lbs/ft	kg/m
1-1/4	1.25	31.8	10.00	254.0	0.50	0.74
2	2.00	50.8	10.00	254.0	0.60	0.89

Available Materials

Prefix	Top Plate Material	Base Chain Material	Temperature						Chain Strength		FDA Approval
			Fahrenheit			Celsius					
			min	max		min	max				
				dry	wet		dry	wet	lbs	N	
AS	Anti-Static	Stainless Steel	0	+180	+150	-18	+82	+66	420	1,868	-
ESD	Electrostatic Dissipative	Stainless Steel	0	+180	+180	-18	+82	+82	420	1,868	-
FR	Flame Retardant	Stainless Steel	0	+180	+140	-18	+82	+60	420	1,868	-
HP™	High Performance	Stainless Steel	-40	+180	+150	-40	+82	+66	420	1,868	✓
WHP	White High Performance	Stainless Steel	-40	+180	+150	-40	+82	+66	420	1,868	✓
HS	Heat Stabilized	Stainless Steel	-40	+220	+212	-40	+104	+100	420	1,868	-
LF	Low Friction	Stainless Steel	-40	+180	+150	-40	+82	+66	420	1,868	✓
WLF	White Low Friction	Stainless Steel	-40	+180	+150	-40	+82	+66	420	1,868	✓
MR	Melt Resistant	Stainless Steel	-80	+220	NR	-62	+104	NR	420	1,868	-
P	Chemical Resistant	Stainless Steel	0	+180	+140	-18	+82	+60	420	1,868	✓
DUV	Ultraviolet Resistant	Stainless Steel	0	+180	+150	-18	+82	+66	420	1,868	-
BWR	Black Wear Resistant	Stainless Steel	-40	+180	NR	-40	+82	NR	420	1,868	-

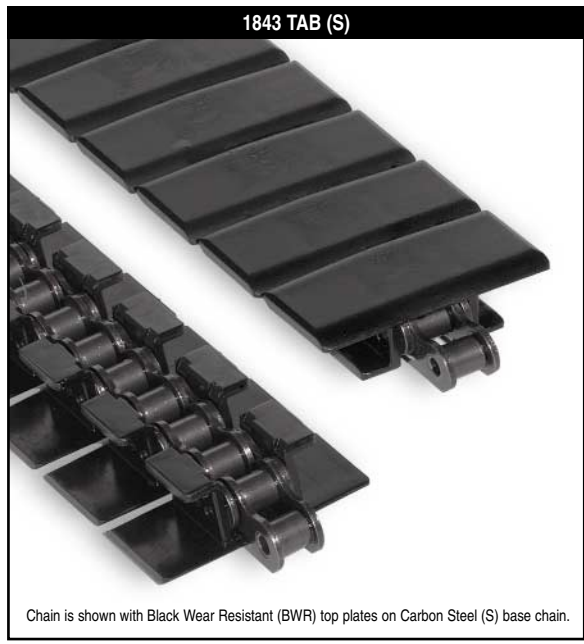
Standard materials are highlighted. All other materials are available on a made-to-order basis. Chain strength is listed at room temperature. NR = Not Recommended.

Regulatory Information

The Food and Drug Administration (FDA) accepts certain materials for direct food contact. FDA approved material is compliant to FDA 21 CFR § 177.

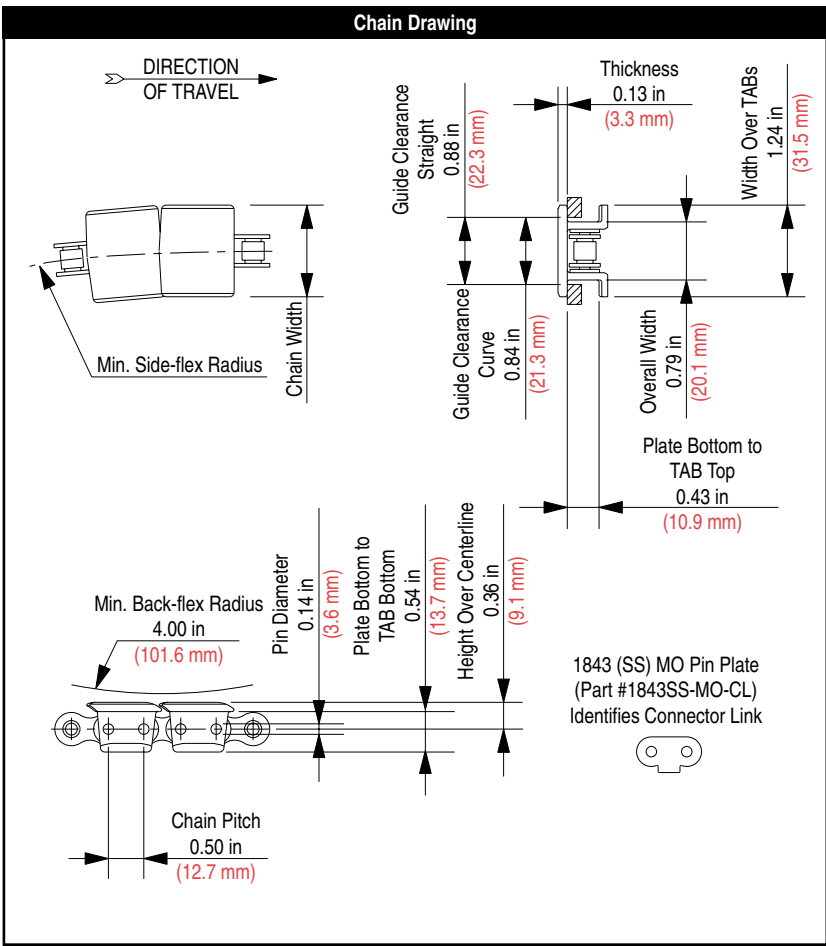
Rexnord, Rex, TableTop and HP are trademarks of Rexnord Corporation. All rights reserved.

- #### Additional Notes
1. Stocked in 240 pitch, 10 ft (3.048 m) length strands.
 2. Uses 1843 stainless steel (SS) base chain (Part #1843SS-BC).
 3. Chain runs on ANSI No. 40 sprockets.



Chain is shown with Black Wear Resistant (BWR) top plates on Carbon Steel (S) base chain.

Chain Information						
Chain Width		Min. Side-flex Radius		Approximate Weight		
desc	in	mm	in	mm	lbs/ft	kg/m
1-1/4	1.25	31.8	10.00	254.0	0.50	0.74
2	2.00	50.8	10.00	254.0	0.60	0.89



Available Materials											
Prefix	Top Plate Material	Base Chain Material	Temperature						Chain Strength		FDA Approval
			Fahrenheit			Celsius					
			min	max		min	max		lbs	N	
AS	Anti-Static	Carbon Steel	0	+180	NR	-18	+82	NR	600	2,669	-
ESD	Electrostatic Dissipative	Carbon Steel	0	+180	NR	-18	+82	NR	600	2,669	-
FR	Flame Retardant	Carbon Steel	0	+180	NR	-18	+82	NR	600	2,669	-
HP™	High Performance	Carbon Steel	-40	+180	NR	-40	+82	NR	600	2,669	-
WHP	White High Performance	Carbon Steel	-40	+180	NR	-40	+82	NR	600	2,669	-
HS	Heat Stabilized	Carbon Steel	-40	+220	NR	-40	+104	NR	600	2,669	-
LF	Low Friction	Carbon Steel	-40	+180	NR	-40	+82	NR	600	2,669	-
WLF	White Low Friction	Carbon Steel	-40	+180	NR	-40	+82	NR	600	2,669	-
MR	Melt Resistant	Carbon Steel	-80	+220	NR	-62	+104	NR	600	2,669	-
P	Chemical Resistant	Carbon Steel	0	+180	NR	-18	+82	NR	600	2,669	-
DUV	Ultraviolet Resistant	Carbon Steel	0	+180	NR	-18	+82	NR	600	2,669	-
BWR	Black Wear Resistant	Carbon Steel	-40	+180	NR	-40	+82	NR	600	2,669	-

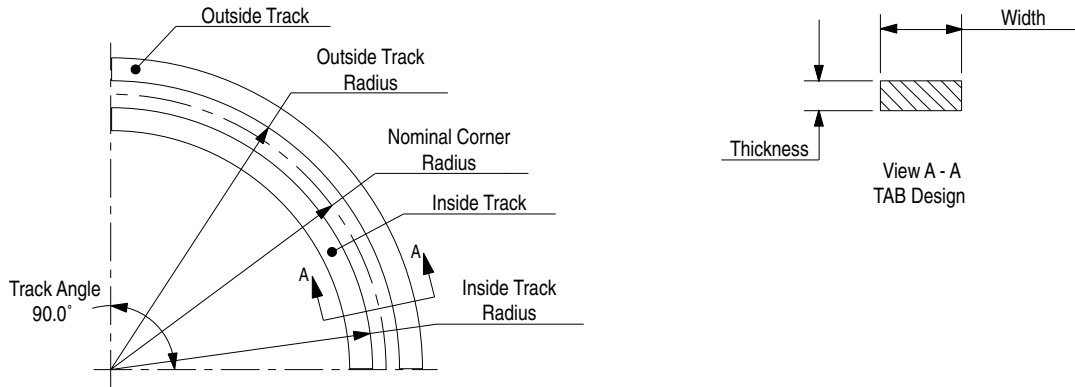
Standard materials are highlighted. All other materials are available on a made-to-order basis. Chain strength is listed at room temperature. NR = Not Recommended.

Regulatory Information

Rexnord, Rex, TableTop and HP are trademarks of Rexnord Corporation. All rights reserved.

- Additional Notes**
1. Stocked in 240 pitch, 10 ft (3.048 m) length strands.
 2. Uses 1843 carbon steel (S) base chain (Part #1843-BC).
 3. Chain runs on ANSI No. 40 sprockets.

Corner Track (Two Piece)

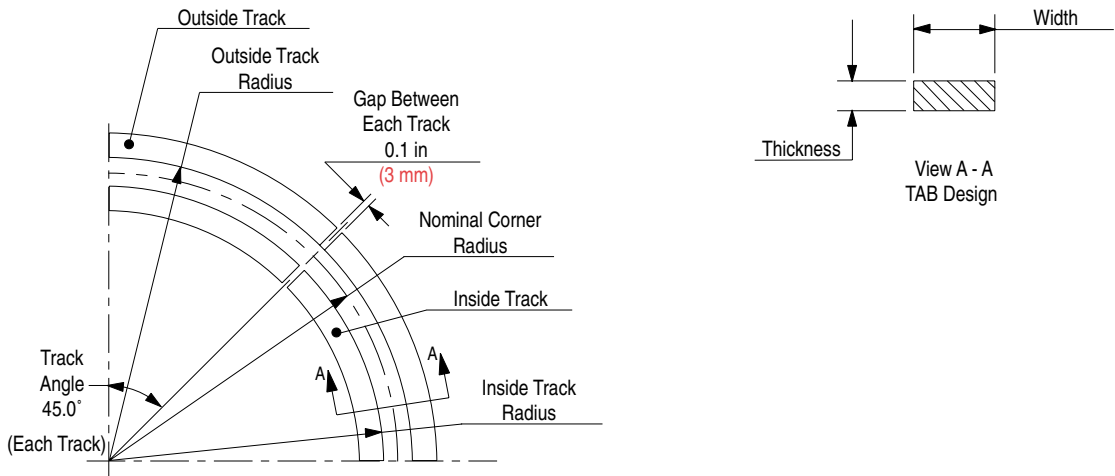


Corner track number supplied as one 90° inside and one 90° outside track, which can be used as either carry or return.

Corner Track Number	Accommodates Top Plate Width		Nominal Corner Radius		Inside Track Radius		Outside Track Radius		Thickness		Width		Material	Color	Approximate Weight	
	in	mm	in	mm	in	mm	in	mm	in	mm	in	mm			lbs	kg
TAB Design																
N18R3	All	All	18.0	457	17.6	447	18.4	467	0.4	9	1.5	38	Nylatron®	Black	1.28	0.58
N24R3	All	All	24.0	610	23.6	559	24.4	620	0.4	9	1.5	38	Nylatron®	Black	1.71	0.78
U18R3	All	All	18.0	457	17.6	447	18.4	467	0.4	9	1.5	38	UHMWPE	White	1.28	0.58
U24R3	All	All	24.0	610	23.6	559	24.4	620	0.4	9	1.5	38	UHMWPE	White	1.71	0.78

Nylatron is a registered trademark of Polymer Corporation.

Corner Track (Four Piece)



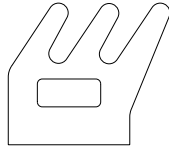
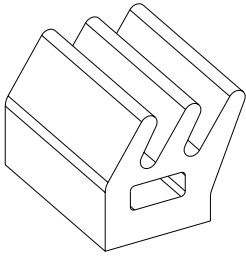
30 in (762 mm) radius furnished in two 45° segments to make one 90° unit.

Corner track number supplied as two 45° inside tracks and two 45° outside tracks, which can be used as either carry or return.

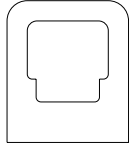
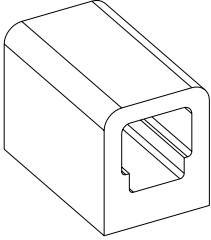
Corner Track Number	Accommodates Top Plate Width		Nominal Corner Radius		Inside Track Radius		Outside Track Radius		Thickness		Width		Material	Color	Approximate Weight	
	in	mm	in	mm	in	mm	in	mm	in	mm	in	mm			lbs	kg
TAB Design																
N30R3	All	All	30.0	762	29.6	752	30.4	772	0.4	9	1.5	38	Nylatron®	Black	2.13	0.97
U30R3	All	All	30.0	762	29.6	752	30.4	772	0.4	9	1.5	38	UHMWPE	White	2.13	0.97

Nylatron is a registered trademark of Polymer Corporation.

Gripper Attachments



"J" Style
Gripper Attachment



"D" Style
Gripper Attachment

Part Number	Style	Material	Color	Hardness (Shore A)
114-881-1	D	Neoprene	Black	40
114-881-2	D	Neoprene	White	50
114-882-1	J	Neoprene	Black	40
114-882-2	J	Neoprene	White	40
114-882-3	J	EPDM	Black	70-80