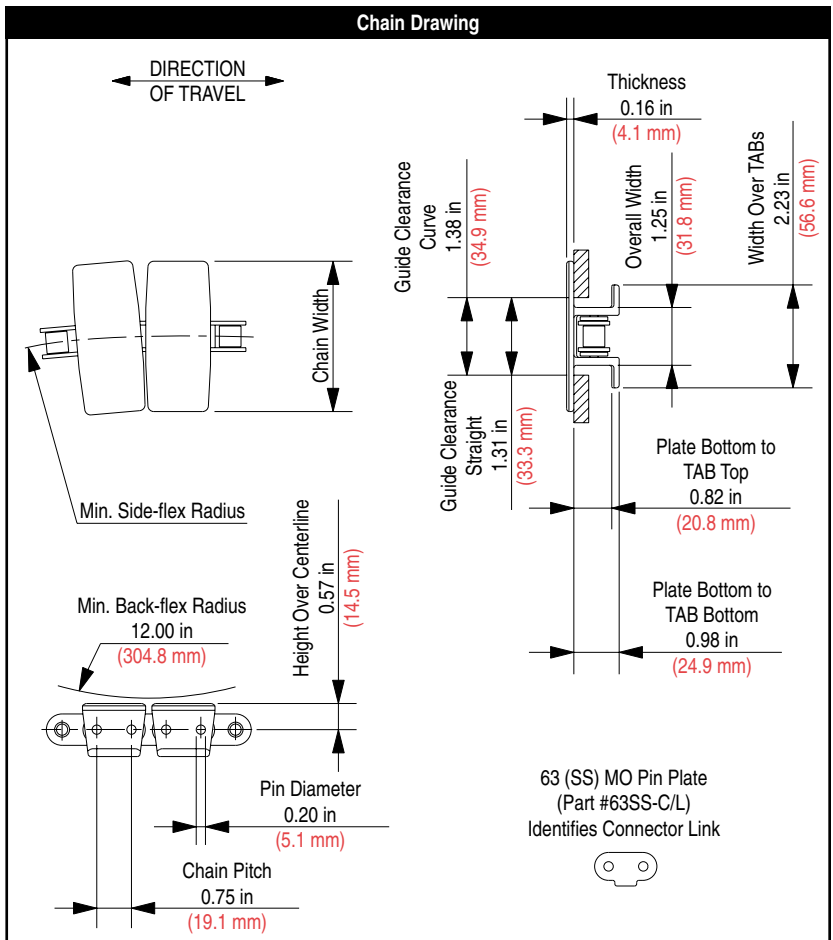




Chain is shown with Low Friction (LF) top plates on Stainless Steel (SS) base chain.



Chain Information

desc	Chain Width		Min. Side-flex Radius		Approximate Weight	
	in	mm	in	mm	lbs/ft	kg/m
2-1/4	2.25	57.2	14.00	355.6	1.34	1.99
3-1/4	3.25	82.6	14.00	355.6	1.41	2.09
4-1/2	4.50	114.3	14.00	355.6	1.52	2.25
6	6.00	152.4	18.00	457.2	1.62	2.40
7-1/2	7.50	190.5	18.00	457.2	1.72	2.55
10	10.00	254.0	18.00	457.2	1.87	2.77
12	12.00	304.8	24.00	609.6	2.02	3.00

Available Materials

Prefix	Top Plate Material	Base Chain Material	Temperature						Chain Strength		FDA Approval
			Fahrenheit			Celsius					
			min	max		min	max		lbs	N	
				dry	wet		dry	wet			
AS	Anti-Static	Stainless Steel	0	+180	+150	-18	+82	+66	750	3,336	-
D	Plain Acetal	Stainless Steel	-40	+180	+150	-40	+82	+66	750	3,336	✓
WD	White Plain Acetal	Stainless Steel	-40	+180	+150	-40	+82	+66	750	3,336	✓
FR	Flame Retardant	Stainless Steel	0	+180	+140	-18	+82	+60	750	3,336	-
HP™	High Performance	Stainless Steel	-40	+180	+150	-40	+82	+66	750	3,336	✓
WHP	White High Performance	Stainless Steel	-40	+180	+150	-40	+82	+66	750	3,336	✓
HS	Heat Stabilized	Stainless Steel	-40	+220	+212	-40	+104	+100	750	3,336	-
LF	Low Friction	Stainless Steel	-40	+180	+150	-40	+82	+66	750	3,336	✓
WLF	White Low Friction	Stainless Steel	-40	+180	+150	-40	+82	+66	750	3,336	✓
MR	Melt Resistant	Stainless Steel	-80	+220	NR	-62	+104	NR	750	3,336	-
P	Chemical Resistant	Stainless Steel	0	+180	+140	-18	+82	+60	750	3,336	✓
DUV	Ultraviolet Resistant	Stainless Steel	0	+180	+150	-18	+82	+66	750	3,336	-

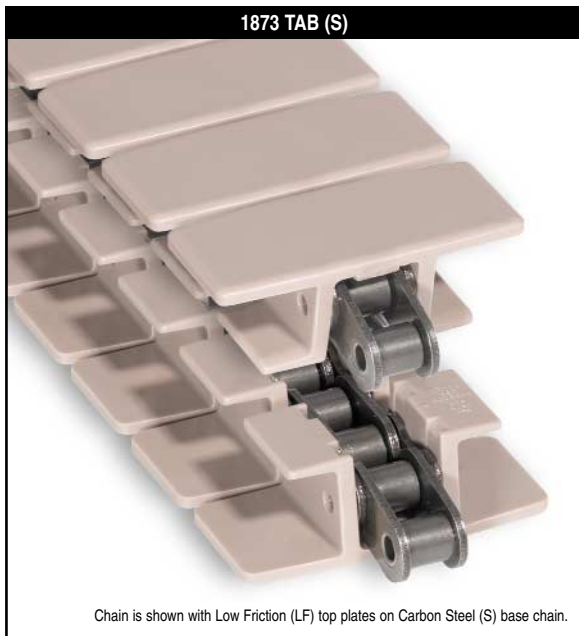
Standard materials are highlighted. All other materials are available on a made-to-order basis. Chain strength is listed at room temperature. NR = Not Recommended.

Regulatory Information

The Food and Drug Administration (FDA) accepts certain materials for direct food contact. FDA approved material is compliant to FDA 21 CFR § 177.

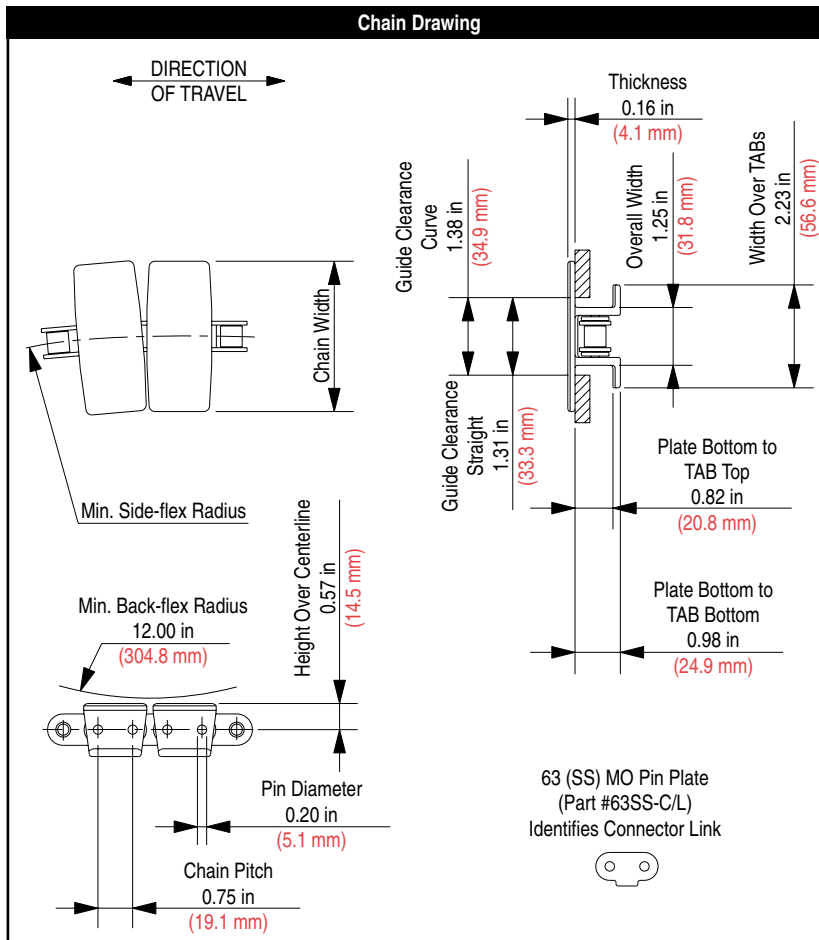
Rexnord, Rex, TableTop and HP are trademarks of Rexnord Corporation. All rights reserved.

- ### Additional Notes
1. Stocked in 160 pitch, 10 ft (3.048 m) length strands.
 2. Uses 63 stainless steel (SS) base chain (Part #63SS-BC).
 3. Chain runs on ANSI No. 60 sprockets.
 4. Plain acetal (D) top plates are not stocked for the 2-1/4 in (57.2 mm) width.



Chain is shown with Low Friction (LF) top plates on Carbon Steel (S) base chain.

Chain Information						
desc	Chain Width		Min. Side-flex Radius		Approximate Weight	
	in	mm	in	mm	lbs/ft	kg/m
2-1/4	2.25	57.2	14.00	355.6	1.34	1.99
3-1/4	3.25	82.6	14.00	355.6	1.41	2.09
4-1/2	4.50	114.3	14.00	355.6	1.52	2.25
6	6.00	152.4	18.00	457.2	1.62	2.40
7-1/2	7.50	190.5	18.00	457.2	1.72	2.55
10	10.00	254.0	18.00	457.2	1.87	2.77
12	12.00	304.8	24.00	609.6	2.02	3.00



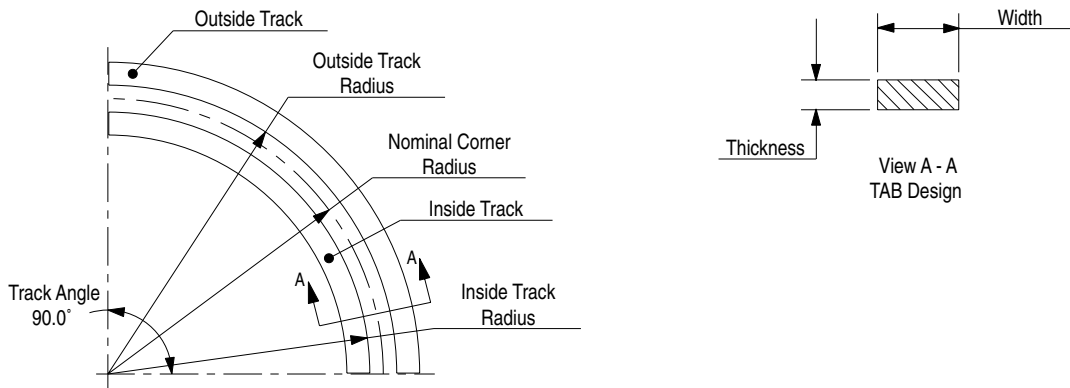
Available Materials												
Prefix	Top Plate Material	Base Chain Material	Temperature							Chain Strength		FDA Approval
			Fahrenheit			Celsius						
			min	max		min	max					
				dry	wet		dry	wet	wet			
AS	Anti-Static	Carbon Steel	0	+180	NR	-18	+82	NR	1,000	4,448	-	
D	Plain Acetal	Carbon Steel	-40	+180	NR	-40	+82	NR	1,000	4,448	-	
WD	White Plain Acetal	Carbon Steel	-40	+180	NR	-40	+82	NR	1,000	4,448	-	
FR	Flame Retardant	Carbon Steel	0	+180	NR	-18	+82	NR	1,000	4,448	-	
HP™	High Performance	Carbon Steel	-40	+180	NR	-40	+82	NR	1,000	4,448	-	
WHP	White High Performance	Carbon Steel	-40	+180	NR	-40	+82	NR	1,000	4,448	-	
HS	Heat Stabilized	Carbon Steel	-40	+220	NR	-40	+104	NR	1,000	4,448	-	
LF	Low Friction	Carbon Steel	-40	+180	NR	-40	+82	NR	1,000	4,448	-	
WLF	White Low Friction	Carbon Steel	-40	+180	NR	-40	+82	NR	1,000	4,448	-	
MR	Melt Resistant	Carbon Steel	-80	+220	NR	-62	+104	NR	1,000	4,448	-	
P	Chemical Resistant	Carbon Steel	0	+180	NR	-18	+82	NR	1,000	4,448	-	
DUV	Ultraviolet Resistant	Carbon Steel	0	+180	NR	-18	+82	NR	1,000	4,448	-	

Standard materials are highlighted. All other materials are available on a made-to-order basis. Chain strength is listed at room temperature. NR = Not Recommended.

Regulatory Information
Rexnord, Rex, TableTop and HP are trademarks of Rexnord Corporation. All rights reserved.

Additional Notes
1. Stocked in 160 pitch, 10 ft (3.048 m) length strands.
2. Uses 63 carbon steel (S) base chain (Part #63-BC).
3. Chain runs on ANSI No. 60 sprockets.
4. Plain acetal (D) top plates are not stocked for the 2-1/4 in (57.2 mm) width.

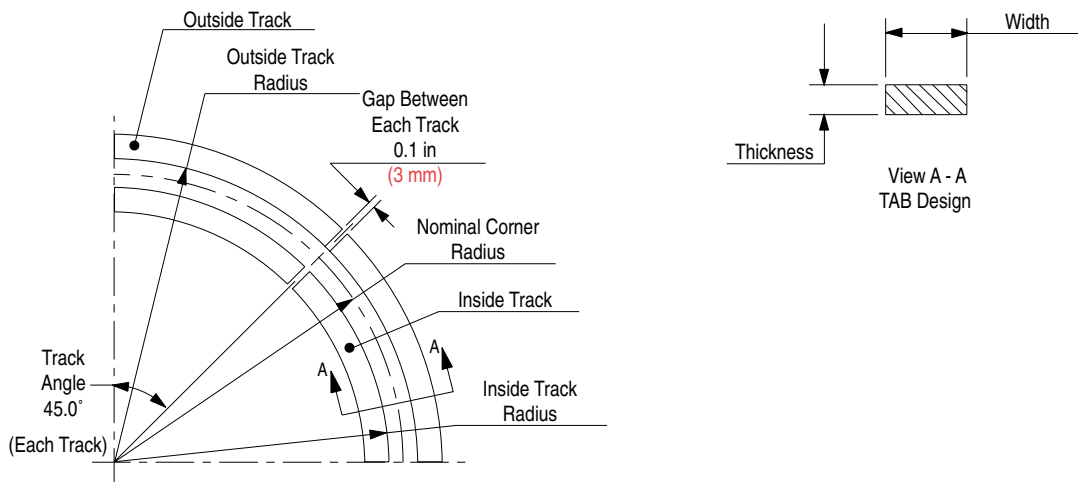
Corner Track (Two Piece)



Corner track number supplied as one 90° inside and one 90° outside track, which can be used as either carry or return.

Corner Track Number	Accommodates Top Plate Width		Nominal Corner Radius		Inside Track Radius		Outside Track Radius		Thickness		Width		Material	Color	Approximate Weight	
	in	mm	in	mm	in	mm	in	mm	in	mm	in	mm			lbs	kg
TAB Design																
U18R6	All	All	18.0	457	17.3	439	18.7	475	0.7	19	1.5	38	UHMWPE	White	2.63	1.19
U24R6	All	All	24.0	610	23.3	592	24.7	627	0.7	19	1.5	38	UHMWPE	White	3.51	1.59

Corner Track (Four Piece)

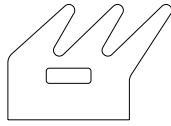
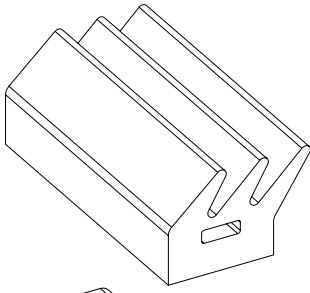


30 in (762 mm) radius furnished in two 45° segments to make one 90° unit.

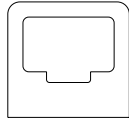
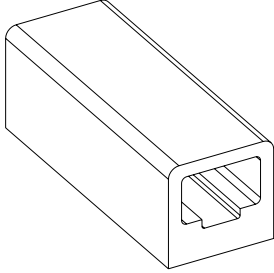
Corner track number supplied as two 45° inside tracks and two 45° outside tracks, which can be used as either carry or return.

Corner Track Number	Accommodates Top Plate Width		Nominal Corner Radius		Inside Track Radius		Outside Track Radius		Thickness		Width		Material	Color	Approximate Weight	
	in	mm	in	mm	in	mm	in	mm	in	mm	in	mm			lbs	kg
TAB Design																
U30R6	All	All	30.0	762	29.3	744	30.7	780	0.7	19	1.5	38	UHMWPE	White	4.38	1.99

Gripper Attachments



"J" Style
Gripper Attachment



"D" Style
Gripper Attachment

Part Number	Style	Material	Color	Hardness (Shore A)
114-582-1	D	Neoprene	Black	40
114-582-2	D	Neoprene	White	50
114-582-3	D	Neoprene	White	40
114-582-4	D	Neoprene	Black	60
114-1625-1	D (Thick Wall)	Neoprene	White	40
114-582-5	D	EPDM	White	50
114-582-6	D	EPDM	White	80
114-582-7	D	EPDM	Black	50
114-647-1	J	Neoprene	Black	40
114-647-2	J	Neoprene	White	50
114-647-3	J	Neoprene	White	40
114-647-4	J	EPDM	White	80
114-647-5	J	EPDM	White	50