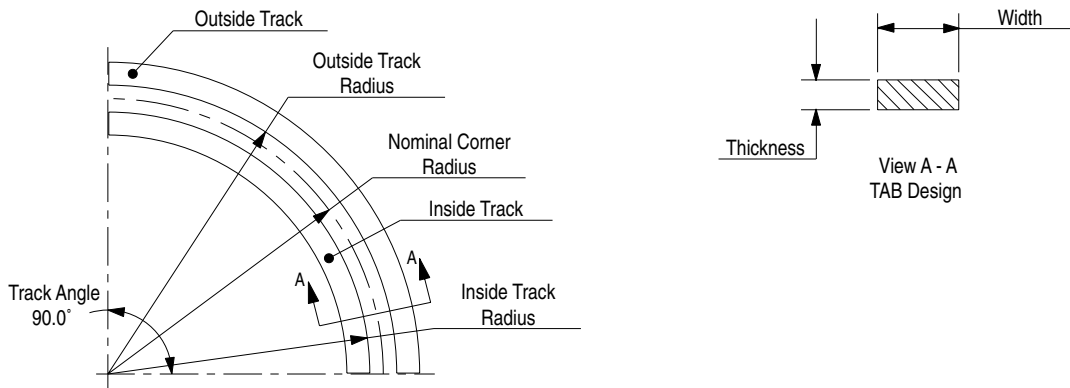


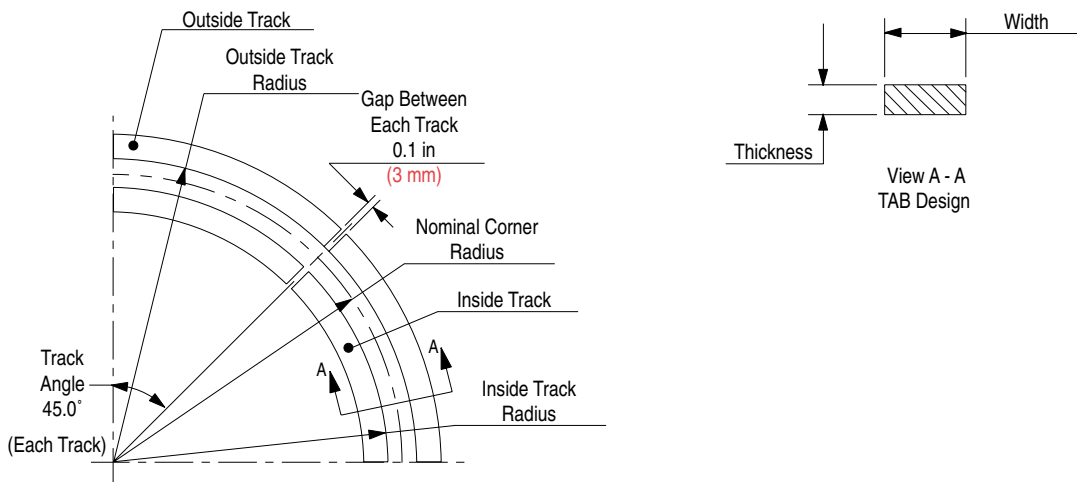
Corner Track (Two Piece)



Corner track number supplied as one 90° inside and one 90° outside track, which can be used as either carry or return.

Corner Track Number	Accommodates Top Plate Width		Nominal Corner Radius		Inside Track Radius		Outside Track Radius		Thickness		Width		Material	Color	Approximate Weight	
	in	mm	in	mm	in	mm	in	mm	in	mm	in	mm			lbs	kg
TAB Design																
U18R6	All	All	18.0	457	17.3	439	18.7	475	0.7	19	1.5	38	UHMWPE	White	2.63	1.19
U24R6	All	All	24.0	610	23.3	592	24.7	627	0.7	19	1.5	38	UHMWPE	White	3.51	1.59

Corner Track (Four Piece)

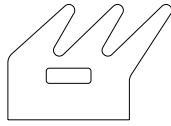
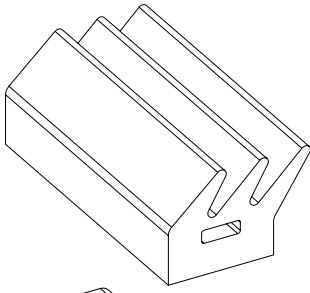


30 in (762 mm) radius furnished in two 45° segments to make one 90° unit.

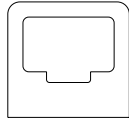
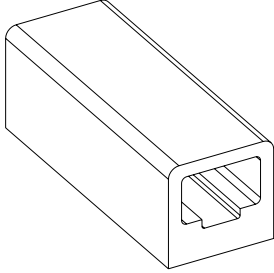
Corner track number supplied as two 45° inside tracks and two 45° outside tracks, which can be used as either carry or return.

Corner Track Number	Accommodates Top Plate Width		Nominal Corner Radius		Inside Track Radius		Outside Track Radius		Thickness		Width		Material	Color	Approximate Weight	
	in	mm	in	mm	in	mm	in	mm	in	mm	in	mm			lbs	kg
TAB Design																
U30R6	All	All	30.0	762	29.3	744	30.7	780	0.7	19	1.5	38	UHMWPE	White	4.38	1.99

Gripper Attachments



"J" Style
Gripper Attachment



"D" Style
Gripper Attachment

Part Number	Style	Material	Color	Hardness (Shore A)
114-582-1	D	Neoprene	Black	40
114-582-2	D	Neoprene	White	50
114-582-3	D	Neoprene	White	40
114-582-4	D	Neoprene	Black	60
114-1625-1	D (Thick Wall)	Neoprene	White	40
114-582-5	D	EPDM	White	50
114-582-6	D	EPDM	White	80
114-582-7	D	EPDM	Black	50
114-647-1	J	Neoprene	Black	40
114-647-2	J	Neoprene	White	50
114-647-3	J	Neoprene	White	40
114-647-4	J	EPDM	White	80
114-647-5	J	EPDM	White	50