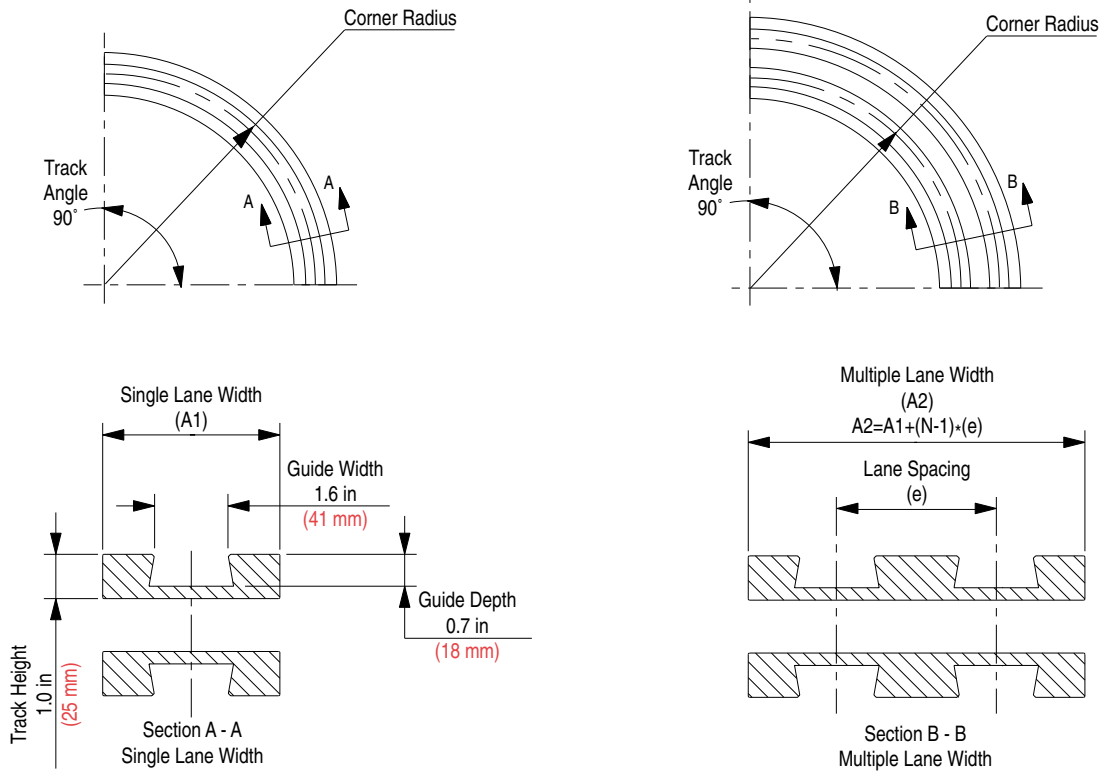


Corner Track (One Piece)



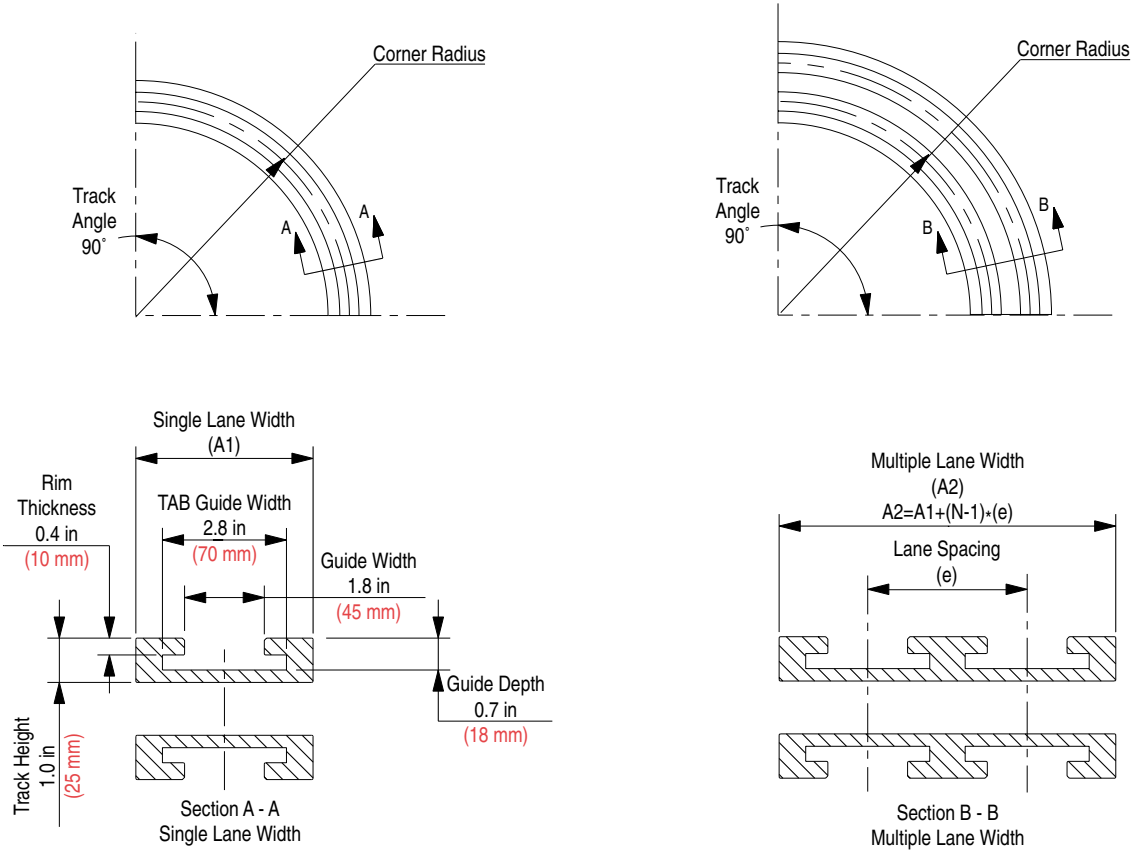
Corner track number supplied as one 90° inside and one 90° outside track, which can be used as either carry or return.

All one piece corner tracks are available on a made-to-order basis.

For 881 (bevel) chain only. Do not use with 881 TAB chains.

Corner Track Number	Chain Width		Corner Radius		Single Lane Width (A1)		Multiple Lane Width (A2)		Lane Spacing (e)		Material	Color	Number of Lanes (N)	Approximate Weight			
	in	mm	in	mm	in	mm	in	mm	in	mm				lbs	kg		
KSU013457-1	3-1/4	82.6	18.0	457	3.9	100	-	-	3.5	90	UHMWPE	Black	1	9.15	4.15		
KSU013457-2							7.5	190					2	17.37	7.88		
KSU013457-3							11.0	280					3	25.59	11.61		
KSU013457-4							14.6	370					4	33.84	15.35		
KSU013610-1	24.0	610	24.0	610	3.9	100	-	-	3.5	90			1	12.20	5.53		
KSU013610-2							7.5	190					2	23.16	10.51		
KSU013610-3							11.0	280					3	34.12	15.48		
KSU013610-4							14.6	370					4	45.12	20.47		
KSU018610-1	4-1/2	114.3	24.0	610	4.9	125	-	-	4.7	120			1	14.93	6.77		
KSU018610-2							9.6	245					2	29.85	13.54		
KSU018610-3							14.4	365					3	44.47	20.17		
KSU018610-4							19.1	485					4	59.11	26.81		
KSU030610-1	7-1/2	190.5	24.0	610	7.9	200	-	-	7.68	195			1	24.37	11.05		
KSU030610-2							15.6	395					2	48.18	21.85		
KSU030762-1			30.0	762			30.0	762					-	-	1	30.46	13.82
KSU030762-2													15.6	395	2	60.23	27.32

Corner Track (One Piece)



Corner track number supplied as one 90° inside and one 90° outside track, which can be used as either carry or return.

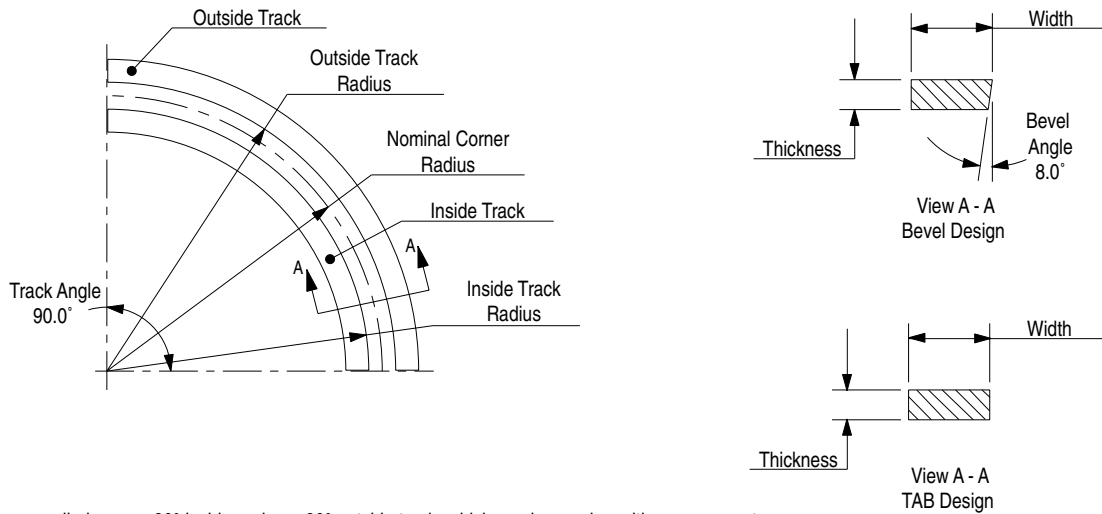
All one piece corner tracks are available on a made-to-order basis.

For 881 TAB chain only. Do not use with 881 (bevel) chains.

Corner Track Number	Chain Width		Corner Radius		Single Lane Width (A1)		Multiple Lane Width (A2)		Lane Spacing (e)		Material	Color	Number of Lanes (N)	Approximate Weight													
	in	mm	in	mm	in	mm	in	mm	in	mm				lbs	kg												
KTU013457-1	3-1/4	82.6	18.0	457	3.9	100	-	-	3.5	90	UHMWPE	Black	1	9.15	4.15												
KTU013457-2							2	17.37					7.88														
KTU013457-3							3	25.59					11.61														
KTU013457-4							4	33.84					15.35														
KTU013610-1	3-1/4	82.6	24.0	610	3.9	100	-	-	3.5	90			UHMWPE	Black	1	12.20	5.53										
KTU013610-2							2	23.16							10.51												
KTU013610-3							3	34.12							15.48												
KTU013610-4							4	45.12							20.47												
KTU018610-1	4-1/2	114.3	24.0	610	4.9	125	-	-	4.7	120					UHMWPE	Black	1	14.93	6.77								
KTU018610-2							2	29.85									13.54										
KTU018610-3							3	44.47									20.17										
KTU018610-4							4	59.11									26.81										
KTU030610-1	7-1/2	190.5	24.0	610	7.9	200	-	-	7.7	195	UHMWPE	Black					1	24.37	11.05								
KTU030610-2							2	48.18									21.85										
KTU030762-1							7-1/2	190.5									30.0	762	7.9	200	-	-	7.7	195	1	30.46	13.82
KTU030762-2																					2	60.23			27.32		

Rex® 881 Series TableTop® Chain Accessories

Corner Track (Two Piece)

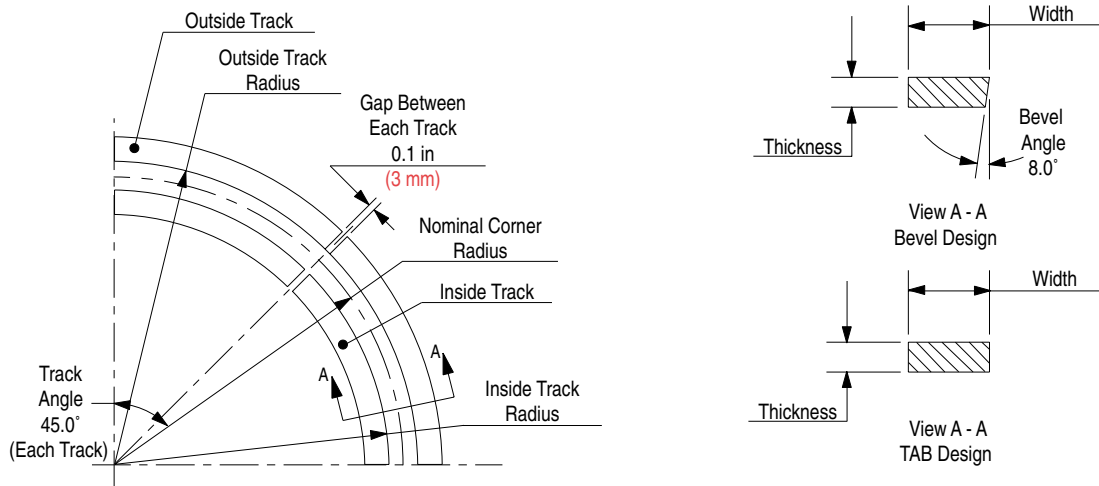


Corner track number supplied as one 90° inside and one 90° outside track, which can be used as either carry or return.

Corner Track Number	Accommodates Top Plate Width		Nominal Corner Radius		Inside Track Radius		Outside Track Radius		Thickness		Width		Material	Color	Approximate Weight	
	in	mm	in	mm	in	mm	in	mm	in	mm	in	mm			lbs	kg
Bevel Design																
N18B3	3-1/4	82.6	18.0	457	17.2	437	18.8	478	0.4	9	1.0	25	Nylatron®	Black	0.85	0.39
N24B3	All	All	24.0	610	23.2	589	24.8	630	0.4	9	1.0	25	Nylatron®	Black	1.14	0.52
U18B3	3-1/4	82.6	18.0	457	17.2	437	18.8	478	0.4	9	1.0	25	UHMWPE	White	0.85	0.39
U24B3	All	All	24.0	610	23.2	589	24.8	630	0.4	9	1.0	25	UHMWPE	White	1.14	0.52
TAB Design																
N18R3	3-1/4	82.6	18.0	457	17.1	435	18.9	480	0.4	9	1.5	38	Nylatron®	Black	1.28	0.58
N24R3	All	All	24.0	610	23.1	587	24.9	632	0.4	9	1.5	38	Nylatron®	Black	1.71	0.78
U18R3	3-1/4	82.6	18.0	457	17.1	435	18.9	480	0.4	9	1.5	38	UHMWPE	White	1.28	0.58
U24R3	All	All	24.0	610	23.1	587	24.9	632	0.4	9	1.5	38	UHMWPE	White	1.71	0.78

Nylatron is a registered trademark of Polymer Corporation.

Corner Track (Four Piece)



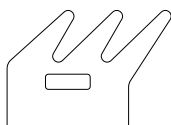
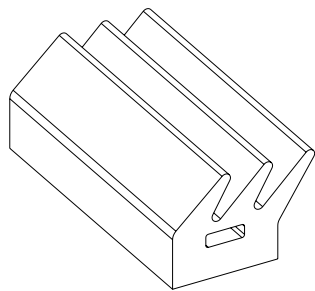
30 in (762 mm) radius furnished in two 45° segments to make one 90° unit.

Corner track number supplied as two 45° inside tracks and two 45° outside tracks, which can be used as either carry or return.

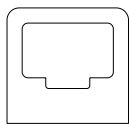
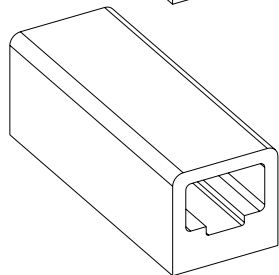
Corner Track Number	Accommodates Top Plate Width		Nominal Corner Radius		Inside Track Radius		Outside Track Radius		Thickness		Width		Material	Color	Approximate Weight	
	in	mm	in	mm	in	mm	in	mm	in	mm	in	mm			lbs	kg
Bevel Design																
N30B3	All	All	30.0	762	29.2	741	30.8	783	0.4	9	1.5	38	Nylatron®	Black	2.13	0.97
U30B3	All	All	30.0	762	29.2	741	30.8	783	0.4	9	1.5	38	UHMWPE	White	2.13	0.97
TAB Design																
N30R3	All	All	30.0	762	29.2	741	30.8	783	0.4	9	1.5	38	Nylatron®	Black	2.13	0.97
U30R3	All	All	30.0	762	29.2	741	30.8	783	0.4	9	1.5	38	UHMWPE	White	2.13	0.97

Nylatron is a registered trademark of Polymer Corporation.

Gripper Attachments



"J" Style
Gripper Attachment



"D" Style
Gripper Attachment

Part Number	Style	Material	Color	Hardness (Shore A)
114-582-1	D	Neoprene	Black	40
114-582-2	D	Neoprene	White	50
114-582-3	D	Neoprene	White	40
114-582-4	D	Neoprene	Black	60
114-1625-1	D (Thick Wall)	Neoprene	White	40
114-582-5	D	EPDM	White	50
114-582-6	D	EPDM	White	80
114-582-7	D	EPDM	Black	50
114-647-1	J	Neoprene	Black	40
114-647-2	J	Neoprene	White	50
114-647-3	J	Neoprene	White	40
114-647-4	J	EPDM	White	80
114-647-5	J	EPDM	White	50