

# LF (LOW FRICTION) BUSHED CHAIN

Developed initially for the meat industry, the rollers of this engineered steel conveyor chain are bushed with acetal thermoplastic to resist corrosion and reduce rolling friction by 40%.

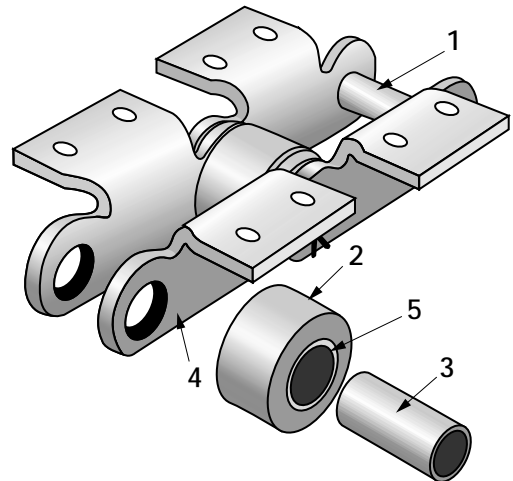
**Improved Handling** – The extremely low friction of LF bushed rollers on either stainless or carbon steel chain bushings minimizes pulsating action on long slow-moving conveyors.

**Saves Power** – Because of low coefficient of rolling friction LF bushed rollers drastically reduce horsepower requirements, thereby reducing operating costs.

**No Lubrication** – Built in self lubricating properties of this material assures smooth trouble free operation under dry conditions.

**Cleaning** – LF bushed rollers may be safely applied in applications where steam or commercial cleaning agents are required.

1. Pins are case hardened steel with three (3) diameter construction for easier assembly, disassembly.
2. Rollers are case hardened steel and have low-friction bushed surface for smooth, long-life performance.
3. Chain bushings are of stainless steel, heat treated for extra corrosion and wear resistance. Carbon steel bushings available where corrosion is not a threat.
4. Sidebars are accurately punched for good pitch control. Chain can be galvanized, or provided with other coatings for added corrosion resistance at slight additional cost.
5. LF materials resist corrosion and wear, have low friction: require no lubrication.



LOW FRICTION BUSHED CHAIN

Dimensions are in inches. Loads and weights are in pounds.

Rex Chain No.	Average Pitch	Rated Max. Load <sup>①</sup>	Max. RPM 12T Spkt.	MUTS x 10 <sup>3</sup>	Pin Length	Sidebars			Pins	Rollers		Bushings		Sprocket Unit No. <sup>②</sup>
						Between	Thickness	Height	Diam.	Face Width	O. D.	Length	O. D.	
						A	K	T	F	G	E	H	D	
BA3420	4.04	3,150	75	23	3.25	1.25	.31	1.50	.63	1.94	2.00	1.94	.94	1113
SRD196	6.00	1,950	40	18	2.72	1.13	.25	1.50	.44	1.06	2.00	1.69	.63	196
SRH1114	6.00	3,150	40	23	3.25	1.31	.31	1.50	.63	1.19	2.00	1.94	.94	196
BA1670	6.00	3,150	40	23	3.25	1.31	.31	1.50	.63	1.19	2.25	1.94	.94	2180

<sup>①</sup> Refer to Engineering Manual for use of 'Rated Working Load' in conveyor chain selection.

<sup>②</sup> Fabricated steel sprockets are recommended.

# ■ LF (LOW FRICTION) BUSHED CHAIN

The configurations shown are versions commonly used in the meat industry:

Pins and rollers are case hardened (carburized).

Sidebars and chain bushings are thru-hardened. Roller bushings are LF Acetal.

Pins, rollers and sidebars are galvanized, and chain bushings are stainless steel.

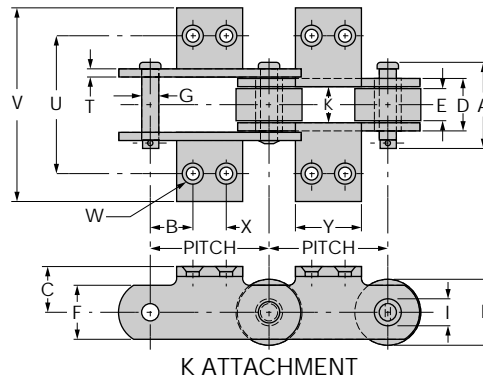
For a greater degree of corrosion resistance, these chains are available with the following optional finishes:

Sidebars can be provided with an optional coating for a higher level of corrosion resistance.

Pins and rollers can be electroless nickel plated (ENP).

LF bushed chains are available for other applications.

## ATTACHMENTS



LOW FRICTION BUSHED CHAIN

Dimensions are in inches. Loads and weights are in pounds.

Rex Chain No. w/K-Attachment Every Pitch	U	V	W <sup>①</sup>		B	X	Y	C	Wgt. Per Ft. K-Attachment Every Pitch
			Bolt Dia.	Bolt Hole					
BA3420-K28	4.13	5.93	3/8	.41	1.27	1.50	2.75	1.25	11.0
SRD196-K201	4.00	5.66	7/16	.50	2.00	2.00	3.50	1.25	7.5
SRH1114-K28	4.00	5.38	3/8	.41	2.00	2.00	3.50	1.12	10.7
BA1670-K241	4.06	5.31	11/16	.78	2.00	2.00	3.50	1.38	11.2

① Attachment holes are countersunk.