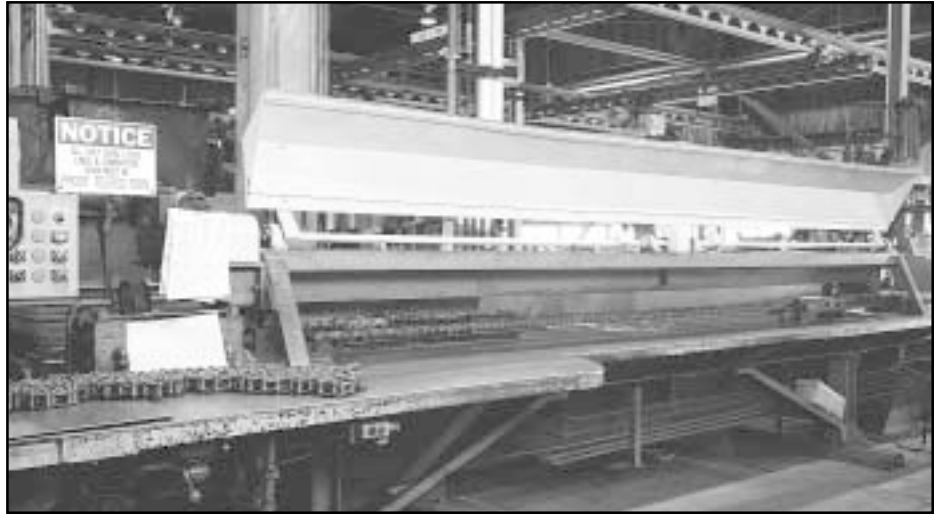


■ CAST CHAINS

Engineered Steel and Welded Steel Chains are recommended for most applications. Engineered Steel construction is strongly recommended for bucket elevator applications.

Cast Chains (pages 47-51) may be slightly better suited to applications involving severely corrosive atmospheres or where chain temperatures reach above 500° F. Contact Rexnord for recommendations relating to the specific application.

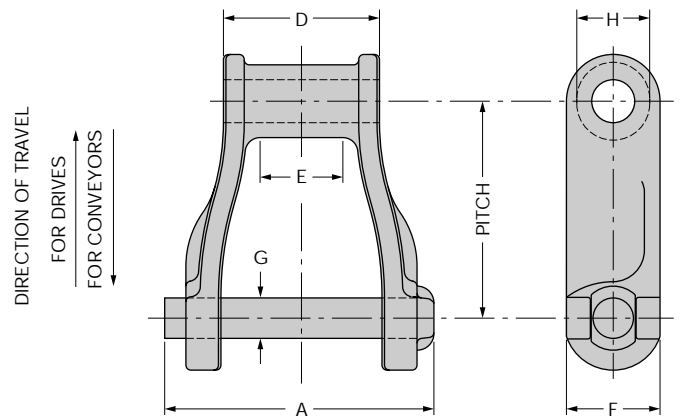
Cast Combination Chains (pages 54-55) may provide superior service where heavy downward loading and sliding across an extremely gritty or abrasive surface has resulted in a chain wear problem. Where, in addition, problems have been encountered with chain breakage due to heavy impact loading, **XHD Heavy Duty Cast Combination Chain** (pages 52-53) should be considered.



All Cast and Cast Combination chains are 100% inspected and proof tested to ensure that no poorly molded links leave the factory.

MILL – NARROW SERIES

Narrow Series Mill Chains are used primarily for drag conveyor service in the forest products industry, but are also used in many other applications where a sliding chain is required. The closed joint construction permits operation in a moderately dusty or abrasive atmosphere.



Furnished pin and cotter as standard.

Dimensions are in inches. Strengths, loads and weights are in pounds.

Chain No.	Average Pitch	A	D	E	Sidebars	Pins	Barrel Diameter	Rated Working Load	Average Weight Per Foot	Recommended Max. RPM for 12T Sprocket	Sprocket Unit No.®
					F	G	H				
H74	2.609	3.06	1.63	0.94	1.00	0.38	0.88	1,850	3.0	115	78
H78	2.609	3.50	1.88	0.94	1.13	0.50	0.94	2,850	4.2	115	78
H82	3.075	4.06	2.19	1.25	1.25	0.56	1.22	3,700	5.5	90	103
H124	4.000	4.75	2.81	1.88	1.50	0.75		5,000	8.8	75	H124

® Cast or fabricated sprockets may be used. See pages 56-58 for attachment listings.

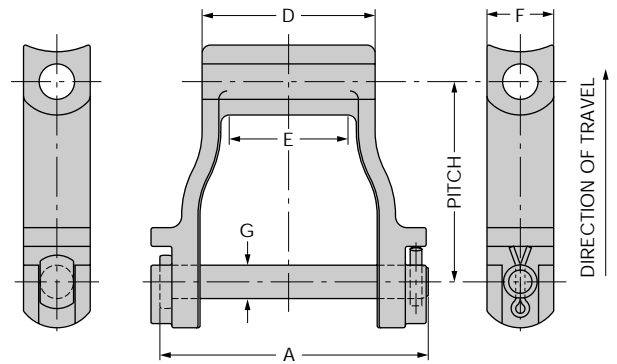
Cast and Cast Combination Chains are not recommended for elevator service.

Note: Dimensions are subject to change. Certified dimensions of ordered material are furnished upon request.

CAST CHAINS

DRAG CHAINS

Drag Chains are suited for handling abrasive bulk materials such as cement clinker, coal ashes and similar materials. Heads on links act as pushers for conveying material and broad wearing shoes are designed to prolong the life of the chain and the trough.



Manufactured in through hardened cast steel.
Furnished pin and cotter as standard.

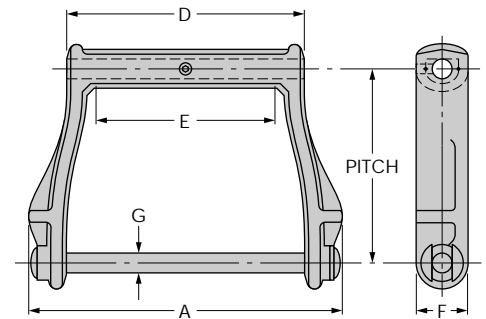
Dimensions are in inches. Strengths, loads and weights are in pounds.

Chain No.	Average Pitch	A	E	Sidebars	Pins	Hook to Flange Centerline	Rated Working Load	Average Weight Per Foot	Recommended Max. RPM for 12T Sprocket	Sprocket Unit No.®
				F	G	H				
CC119	6.000	8.25	5.25	3.63	2.00	1.00	16,000	21	11	119
CC123	9.000	12.59	8.44	6.25	2.50	1.25	23,400	36	7	H123

® Cast or fabricated sprockets may be used.

H SERIES

Available in riveted or cotted construction. Riveted construction shown and furnished unless otherwise specified.



Dimensions are in inches. Strengths, loads and weights are in pounds.

Chain No.	Average Pitch	A	D	E	Sidebars	Pins	Rated Working Load	Average Weight Per Foot	Recommended Max. RPM for 12T Sprocket	Sprocket Unit No.®
					F	G				
H104	6.000	7.50	5.44	4.13	1.50	.63	4,160	8.0	11	H104
H110	6.000	12.50	10.69	9.13	1.50	.63	4,160	12.9	11	H110

® Cast or fabricated sprockets may be used.

Cast and Cast Combination Chains are not recommended for elevator service.

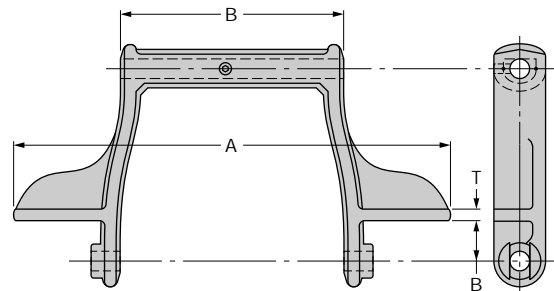
Note: Dimensions are subject to change. Certified dimensions of ordered material are furnished upon request.

■ CAST CHAINS

WING ATTACHMENT

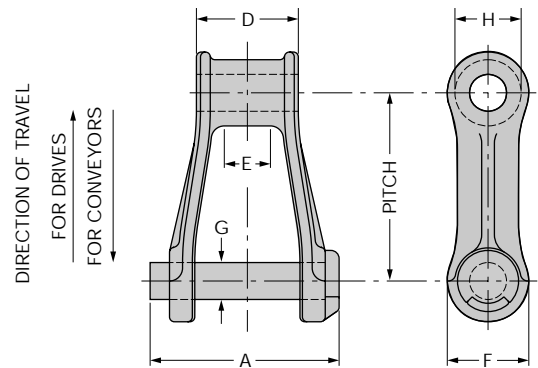
Dimensions are in inches. Weights are in pounds.

Chain No.	Average Weight Per Foot	A	B	T
H110	14.6	17.00	2.25	.22



PINTLE

Pintle Chains are ideal for oven and furnace conveying operations. They are also suitable for a variety of low speed drive applications. The closed pin joint construction permits operation in a moderately dusty or abrasive atmosphere.



Furnished pin and cotter as standard.

REX PINTLE CHAINS – 400/900 SERIES AND 700 SERIES

Dimensions are in inches. Strengths, loads and weights are in pounds.

Chain No.	Average Pitch	A	D	E	Sidebars	Pins	Barrel Diameter	Rated Working Load	Average Weight Per Foot	Recommended Max. RPM for 12T Sprocket	Sprocket Unit No.®
					F	G	H				
945	1.630	2.06	1.06	0.69	0.75	.31	0.63	830	1.5	230	45
955	1.630	2.25	1.13	0.69	0.84	.38	0.63	1,060	1.9	230	45
977	2.308	2.50	1.25	0.69	1.00	.44	0.81	1,650	2.0	135	67
988	2.609	3.00	1.63	0.88	0.94	.44	0.88	2,150	2.9	115	78
C9103	3.075	3.69	1.88	1.13	1.50	.75	1.25	4,250	5.7	90	103
4124	4.043	4.72	2.25	1.50	1.75	.81	1.38	4,560	8.5	65	4124
C720	6.000	3.63	1.88	1.00	1.50	.69	1.38	3,220	4.2	35	720S
720S	6.000	3.94	1.88	1.44	1.56	.75	1.44	4,250	5.1	35	720S
A730	6.000	3.94	2.00	1.13	1.75	.75	1.50	4,500	6.0	35	A730
CS720S	6.000	3.94	1.88	1.13	1.56	.75	1.44	4,250	5.4	35	CS720S
CS730	6.000	3.94	2.00	1.13	1.75	.75	1.50	4,500	6.4	35	CS730
SCA9103	3.075	3.69	1.88	1.13	1.50	.75	1.25	4,250	5.7	90	103

® Cast or fabricated sprockets may be used.

Cast and Cast Combination Chains are not recommended for elevator service.

Note: Dimensions are subject to change. Certified dimensions of ordered material are furnished upon request.

■ CAST CHAINS

900 SERIES PINTLE CHAINS

900 Pintle Chains, often called intermediate carrier chains, are widely used in the sugar industry. Multiple strands, fitted with overlapping, beaded slats, form a continuous apron conveyor for intermediate carrier service.

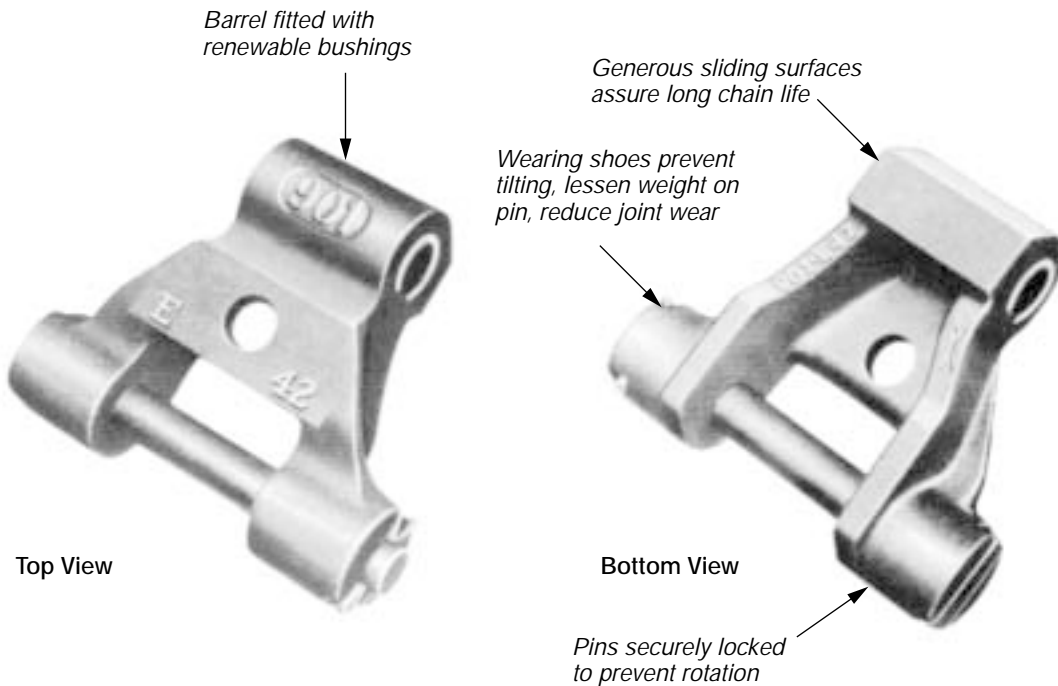
The renewable bushings provide a hard, durable pin-bearing surface and permit high working loads.

Links have outboard driving lugs for operation on double sprockets. This method of engagement prevents the jamming of cane in the link pockets.

All links have generous sliding surfaces to resist wear. Wear shoes at the open end of the link support the chain and lessen the weight on the pin, thereby reducing joint wear. Heavy cross-sections, formed by the wear shoes and reinforcing ribs, strengthen the links. Slots cast in the lugs protect the pin ends and prevent pin rotation.

Links are available in cast material and stainless steel. Pins and bushings are available in case-hardened steel or stainless steel. Bushings of ultra-high molecular weight polyethylene (UHMW-PE) are also available.

Chains with cast links and stainless steel pins and bushings are normally recommended. For greater corrosion resistance all stainless steel chains are preferred.



LINK-BELT 900 SERIES PINTLE CHAINS

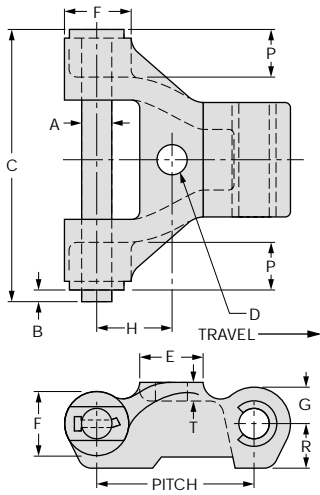
Dimensions are in inches. Strengths, loads and weights are in pounds.

Link-Belt Chain No.	Average Pitch	Rated Working Load	Average Weight	Sprocket Unit No.	Attachments Available
901	3.149	4,150	12.2	901	E41, E42, E43, E44
902	2.970	4,150	12.5	902	E41, E42, E43, E44
907	3.170	4,150	12.1	907	E51

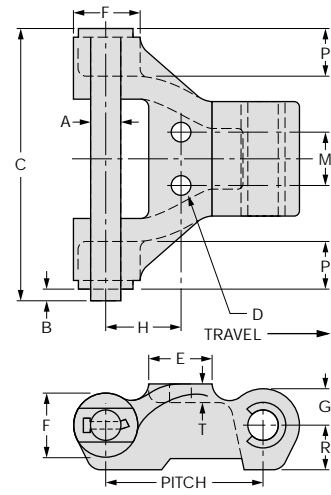
Cast and Cast Combination Chains are not recommended for elevator service.

Note: Dimensions are subject to change. Certified dimensions of ordered material are furnished upon request.

CAST CHAINS



E41, E42, E51 Attachments



E43, E44 Attachments

Dimensions are in inches. Weights are in pounds.

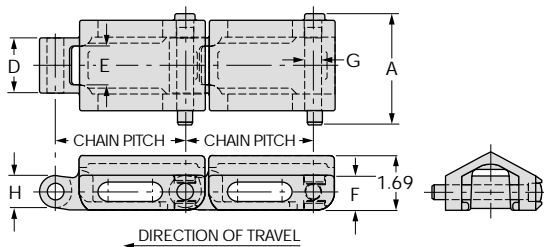
Chain No.	A	B	C	D	E	F	G	H	M	P	R	T	Weight
E41													
901	.625	.19	5.50	.66	1.25	1.34	.78	1.38	—	1.13	.94	.36	12.2
902	.625	.19	5.50	.66	1.25	1.34	.88	1.38	—	1.13	.94	.36	12.5
E42[Ⓢ]													
901	.625	.19	5.50	.66	1.25	1.34	.78	1.58	—	1.13	.94	.36	12.2
902	.625	.19	5.50	.66	1.25	1.34	.88	1.48	—	1.13	.94	.36	12.5
E43													
901	.625	.19	5.50	.41	1.25	1.34	.78	1.38	1.09	1.13	.94	.36	12.2
902	.625	.19	5.50	.41	1.25	1.34	.88	1.38	1.09	1.13	.94	.36	12.5
E44[Ⓢ]													
901	.625	.19	5.50	.41	1.25	1.34	.78	1.58	1.09	1.13	.94	.36	12.2
902	.625	.19	5.50	.41	1.25	1.34	.88	1.48	1.09	1.13	.94	.36	12.5
E51													
907	.625	.19	5.50	.66	1.31	1.44	.72	1.69	—	1.13	.94	.36	12.1

[Ⓢ] Slats may be assembled with laps leading or trailing.

TRANSFER

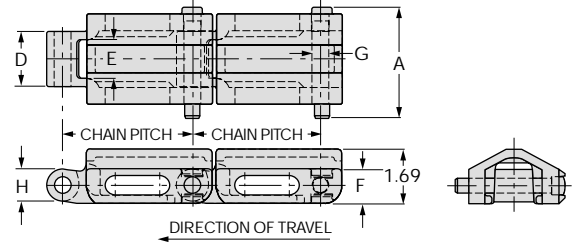
These chains are very popular on lumber sorting tables or anywhere a variety of flat products are sorted. Roof-Top Chain is used chiefly in multiple strands on transfer conveyors.

130RT



Furnished pin and cotter as standard.

138RT and H78RT



Furnished pin and cotter as standard.

TRANSFER CHAINS – ROOF-TOP

Dimensions are in inches. Strengths, loads and weights are in pounds.

Chain No.	Average Pitch	A	D	E	Sidebars	Pins	Barrel Diameter	Rated Working Load	Average Weight Per Foot	Recommended Max. RPM for 12T Sprocket	Sprocket Unit No. [Ⓢ]
					F	G	H				
H78RT	2.609	3.50	1.88	1.06	1.13	.50	0.94	2,350	6.0	115	78
130RT	4.000	3.50	1.69	.95	1.06	.50	1.00	2,200	5.2	60	130
138RT	4.000	3.50	1.69	.95	1.06	.50	1.00	2,200	5.8	60	130

[Ⓢ] Cast or fabricated sprockets may be used.

Cast and Cast Combination Chains are not recommended for elevator service.

Note: Dimensions are subject to change. Certified dimensions of ordered material are furnished upon request.

■ CAST CHAINS

HEAVY DUTY CAST COMBINATION

XHD Extra Heavy Duty Cast Combination Chains are specifically designed for applications where chain wear and breakage problems result due to a combination of heavy impact loading and an extremely gritty or abrasive environment. XHD chains include features that make them ideally suited for applications such as log handling conveyors.

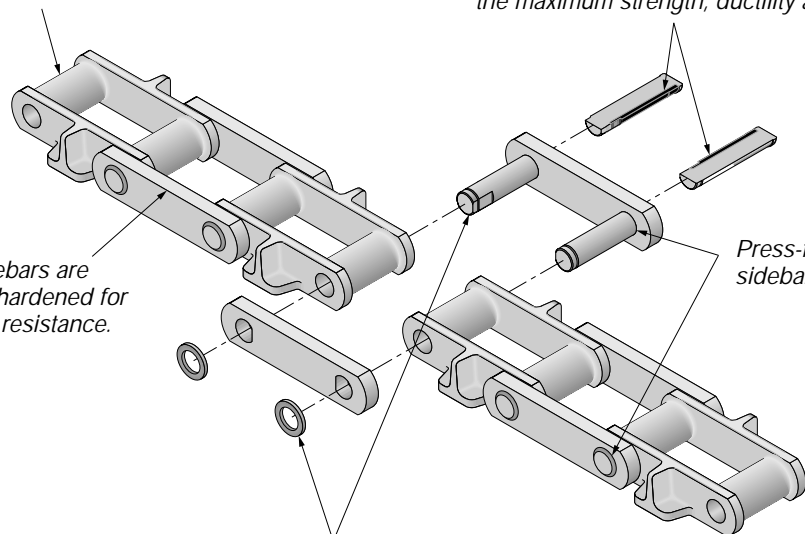


Block links are cast from high strength alloy and thru-hardened to provide maximum strength and resistance to impact, abrasion and wear.

Machined alloy steel rivets are thru-hardened then selectively induction hardened to provide the toughest possible surface on the wear side with the maximum strength, ductility and toughness.

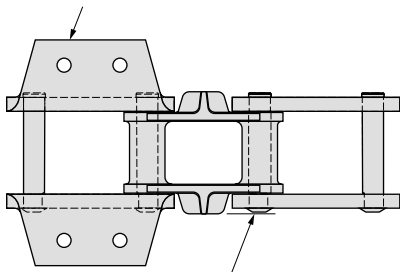
Fabricated steel sidebars are extra thick and thru-hardened for strength and impact resistance.

Press-fit rivets increase sidebar fatigue resistance.



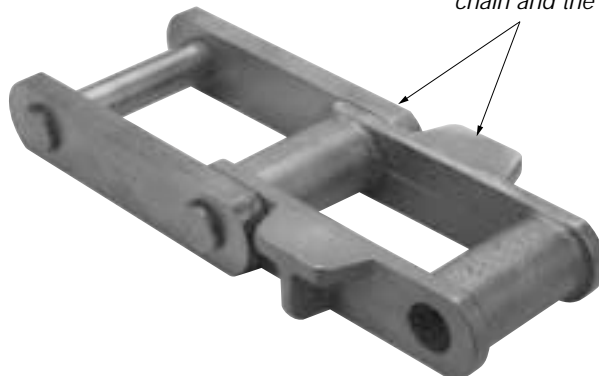
Attachments are fabricated to be integral with the sidebar for maximum strength and reliability.

Partial assembly of field connecting links (rivets factory installed into one sidebar) and welded washer assembly minimize field connection time.



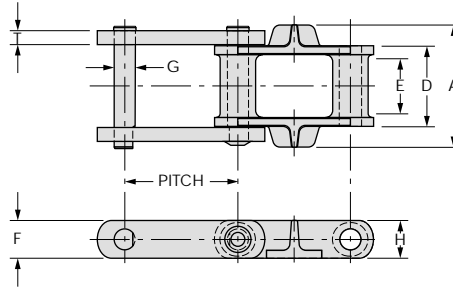
Wear shoes extend to protect rivet ends.

Integrally cast wear shoes on every block link and extra-thick steel sidebars distribute sliding wear and extend the wear life of both the chain and the wear surface.



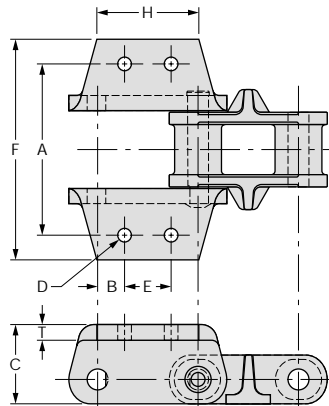
Cast and Cast Combination Chains are not recommended for elevator service.

CAST CHAINS

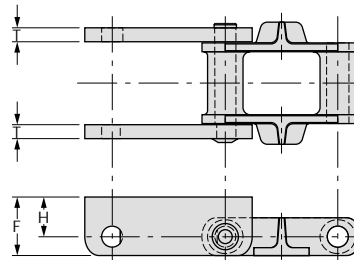


Dimensions are in inches. Weights are in pounds.

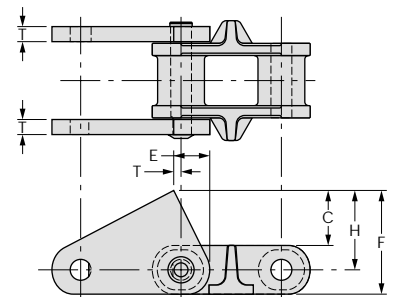
Chain No.	Average Pitch	A	D	E	Sidebar		Pin G	Barrel H	Rated Working Load	Average Weight per Foot	Recommended Max. RPM for 12T Sprocket	Sprocket Number
					T	F						
XHD124	4.060	4.88	3.00	1.75	.63	2.00	0.88	1.63	9,000	17.0	60	XHD124
XHD132	6.050	6.50	4.31	2.94	.75	2.00	1.13	1.75	17,000	18.4	30	XHD132
XHD157	6.050	6.88	4.63	3.00	.75	2.00	1.25	1.84	20,000	24.3	30	XHD157



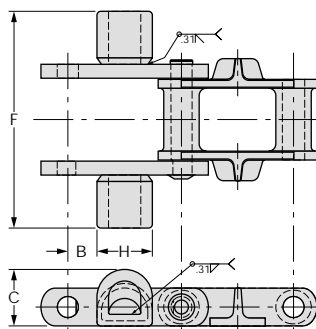
K2



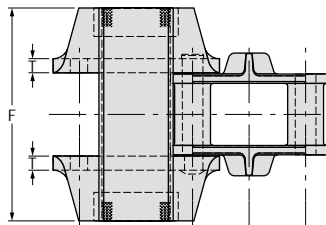
M1



S1



"C" Style Cradle



"B" Style Pulpwood Flight

Dimensions are in inches. Weights are in pounds.

Chain Number	A	B	C	D [Ⓞ]		E	F	H	T	Average Weight per Ft.
				Bolt Dia.	Bolt Hole					
K2										
XHD124	7.13	1.06	3.25	1/2	.56	1.94	9.13	4.25	0.63	26
XHD132	9.00	1.65	3.75	1/2	.56	2.75	11.31	6.34	0.75	31
XHD157	9.31	1.65	4.00	1/2	.56	2.75	11.31	6.81	0.75	36
M1										
XHD132	-	-	-	-	-	-	3.00	2.00	0.75	22
XHD157	-	-	-	-	-	-	3.50	2.25	0.75	28
S1										
XHD124	-	0.32	2.25	-	-	1.50	4.25	3.25	0.63	20
XHD132	-	0.58	2.75	-	-	2.00	4.75	3.75	0.75	23
XHD157	-	0.39	2.75	-	-	2.00	5.25	4.00	0.75	28
"C" Style Cradle										
XHD132	-	1.53	3.00	-	-	-	11.50	3.00	-	26
XHD157	-	1.53	3.00	-	-	-	13.50	3.00	-	29
"B" Style Pulpwood Flight										
XHD132	1.50	2.75	4.88	-	-	3.50	11.31	0.38	0.75	32
XHD157	1.50	2.75	4.88	-	-	3.50	11.31	0.38	0.75	37

Cast and Cast Combination Chains are not recommended for elevator service.

Note: Dimensions are subject to change. Certified dimensions of ordered material are furnished upon request.

CAST CHAINS

COMBINATION

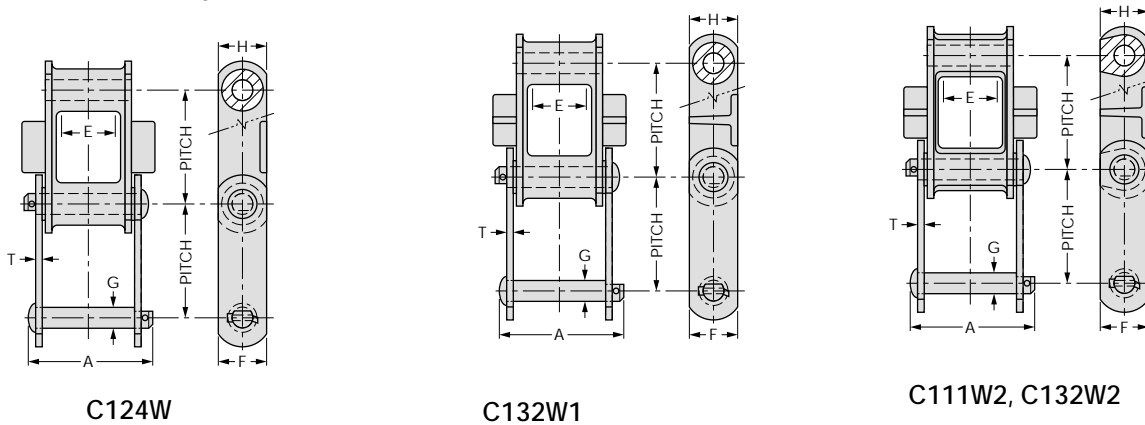
Combination Chains are used extensively for conveyor applications. Because the chain joints are well protected and have generous pin bearing surfaces, they are widely used for handling stone, gravel and similar materials. They are also used for drag conveyor applications because the large link surfaces provide long wear life.

LINK-BELT® STANDARD SERIES CAST COMBINATION CHAINS

Dimensions are in inches. Strengths, loads and weights are in pounds.

Link-Belt Chain No.	Average Pitch	A	D	E	T	Sidebars	Pins	Barrel Diameter	Rated Working Load	Average Weight Per Foot	Recommended Max. RPM for 12T Sprocket	Sprocket Unit No. ①
						F	G	H				
ROLLER-TOP												
C55	1.630	2.06	1.20	0.60	0.19	0.75	0.38	0.63	1,100	2.0	230	55
C56	1.630	2.06	1.20	0.73	0.19	0.75	0.38	0.74	1,100	2.1	230	56
C77	2.308	2.19	1.25	0.50	0.19	0.88	0.44	0.72	1,400	2.2	135	67
C188	2.609	2.69	1.56	0.74	0.25	1.13	0.50	0.88	2,400	3.6	115	78
C131	3.075	3.47	2.03	1.09	0.38	1.50	0.63	1.22	3,800	6.5	90	103
C102B	4.000	4.31	2.88	1.63	0.38	1.50	0.63	0.97	5,000	6.7	60	102B
C102½	4.040	4.59	2.97	1.92	0.38	1.75	0.75	1.38	6,700	9.2	60	102½
C111	4.760	4.72	3.38	2.12	0.38	1.75	0.75	1.44	7,500	9.6	45	111
C133	6.000	3.88	2.25	1.25	0.38	2.00	0.88	1.75	5,000	8.8	35	133
C110	6.000	4.31	2.88	1.76	0.38	1.50	0.63	1.25	5,000	6.0	35	110
C132	6.050	6.27	4.38	2.62	0.50	2.00	1.00	1.72	10,500	14.0	30	132

① Cast or fabricated sprockets may be used. See pages 56-58 for attachment listings.



Available in riveted or cottered construction. Cottered construction shown.
Cottered construction furnished unless otherwise specified.

Dimensions are in inches. Strengths, loads and weights are in pounds.

Link-Belt Chain No.	Average Pitch	A	D	E	T	Sidebars	Pins	Barrel Diameter	Rated Working Load	Average Weight Per Ft.	Recommended Max. RPM for 12T Sprocket	Sprocket Unit No. ①
						F	G	H				
C111W2	4.760	5.12	2.42	.38	.44	1.75	.75	.72	5,950	11.8	55	111
C124W ^②	4.063	5.12	1.69	.50	.38	2.25	.88	1.75	6,300	15.4	75	1240
C132W1	6.050	6.54	3.04	.50	.44	2.00	1.00	1.73	8,330	15.6	40	132
C132W2	6.050	6.54	3.04	.50	.44	2.00	1.00	1.73	8,330	16.0	40	132

① Cast or fabricated sprockets may be used.

② Induction heat treated sidebars.

③ Round barrel. All other chains have an elliptical barrel.

See page 58 for attachment listings.

Cast and Cast Combination Chains are not recommended for elevator service.

Note: Dimensions are subject to change. Certified dimensions of ordered material are furnished upon request.

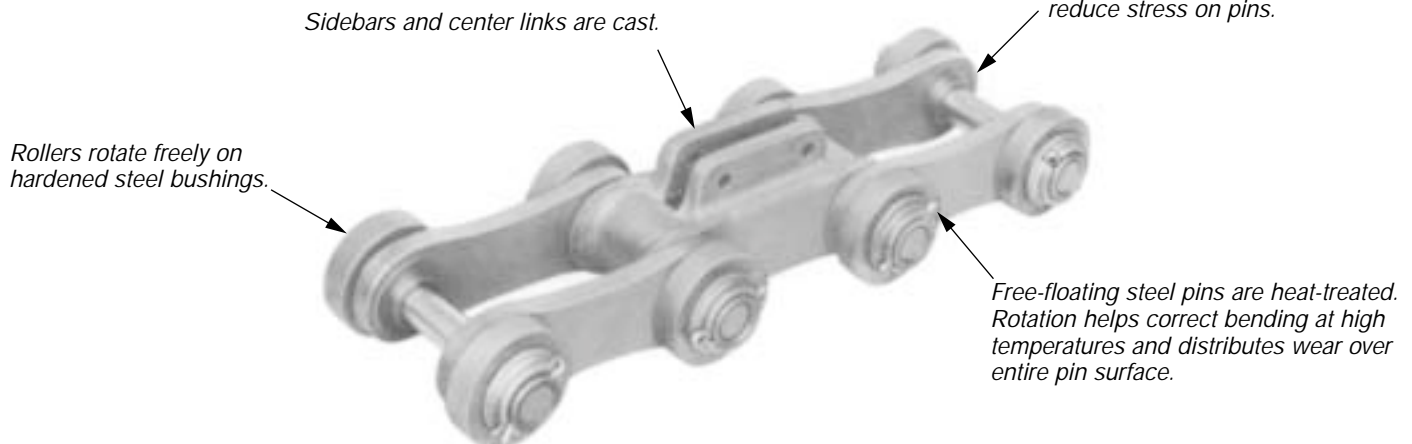
■ CAST CHAINS

SM COMBINATION CHAINS

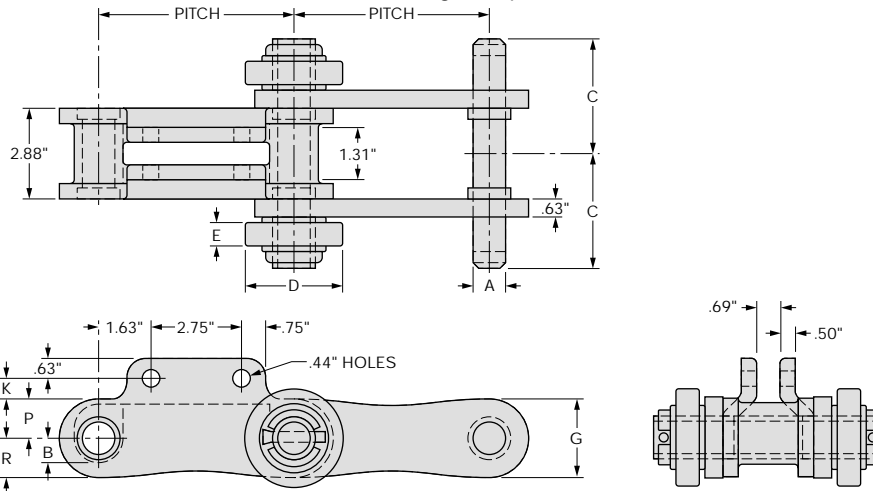
SM Combination Chains are designed primarily for high temperature applications and are extensively used for conveying steel sheets or bars through normalizing and heat-treating furnaces. The chains usually operate in channels under the floor and are thus protected from full exposure to furnace heat. The conveyed material is pushed through the furnace by fingers attached to the center links of the chain. The center links and sidebars are well proportioned for strength and rigidity. Sidebars are cast with bosses which fit into sockets in the center links. This design interlocks the center links and sidebars and relieves the pin from handling the entire working load placed on the chain.

Steel pins are heat-treated. They are free to float in the chain joint. This permits pin rotation, thus exposing the entire pin circumference to wear. It also helps correct pin bending that might occur as a result of high temperatures. The pins extend on each side of the chain to provide a mounting for outboard rollers. Rollers rotate freely on case-hardened steel bushings and are held in place by cast washers.

Clearances between all moving parts are carefully controlled by machining, to prevent binding during operation at high temperatures.



All moving parts machined to provide adequate clearances and to assure free articulation at high temperatures.



Dimensions are in inches. Strengths, loads and weights are in pounds.

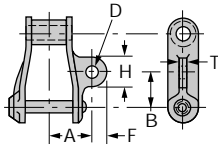
Link-Belt Chain No.	Average Pitch	A	B	C	D	E	G	K	P	R	Rated Working Load	Average Weight Per Foot	Sprocket Unit No. ①
SMGL618 ^②	6.000	.98	.75	3.44	3.00	.78	2.50	.72	1.19	1.19	Contact	24	SMGL618
SMGL628	6.000	1.23	1.00	3.47	3.50	.81	3.00	.53	1.38	1.38	Rexnord	31	SMGL628
SM621	9.000	Offset SM Combination Chain, contact Rexnord											SM621
SM622	6.000	Offset SM Combination Chain, contact Rexnord											SM622

① Cast or fabricated sprockets may be used.
 ② Chain with plain center link (no attachment) also available.

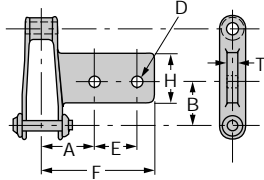
Cast and Cast Combination Chains are not recommended for elevator service.

Note: Dimensions are subject to change. Certified dimensions of ordered material are furnished upon request.

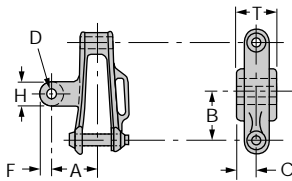
CAST CHAINS – Attachments



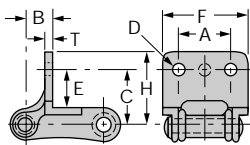
A22 (Figure 1), A42



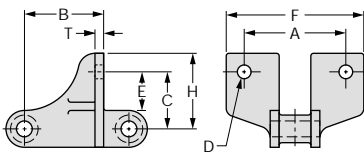
AD474



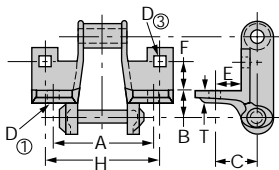
AM116



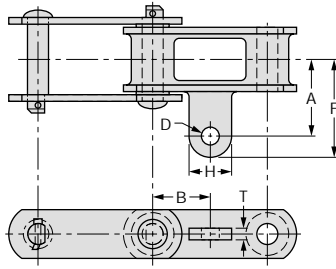
F2 (Figure 1)



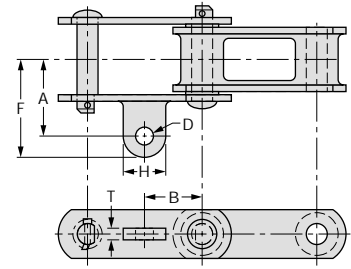
F2 (Figure 2)



F4



A22 (Figure 1)



A22 (Figure 2)

Dimensions are in inches.

Chain Number	A	B	C	D ^①		E	F	H	T
				Bolt Dia.	Bolt Hole				
A22 (Figure 1)									
H78	1.88	1.31	–	3/8	.41	–	0.66	1.31	0.41
A22 (Figure 2)									
C188	1.44	1.31	–	3/8	.41	–	2.08	1.19	.38
A22 (Figure 3)									
C55	1.50	.81	–	5/16	.34	–	1.92	.75	.25
A42									
C9103	1.84	1.50	–	3/8	.41	–	0.63	1.25	0.41
AD474									
720S	3.38	2.25	–	1/2	.56	2.50	–	2.81	0.50
C720	3.38	2.25	–	1/2	.56	2.50	–	2.81	0.50
F4									
H78 ^②	3.75	1.00	1.44	3/8 ^③	.41	0.88	0.94	4.50	0.31
AM116									
720S	2.69	3.00	0.94	5/8	.69	–	0.69	1.38	1.88
C720	2.69	3.00	0.94	5/8	.69	–	0.69	1.38	1.88
F2 (Figure 1)									
720S ^{④⑤}	4.25	3.00	2.00	3/8	.41	1.25	5.31	3.81	0.25
A730 ^⑥	4.25	3.00	2.00	3/8	.41	1.13	5.50	3.94	0.38
C720	4.25	3.00	2.00	3/8	.41	1.25	5.31	3.81	0.25
955	1.06	0.63	0.94	3/16	.22	0.50	1.81	1.25	0.16
977	1.75	0.75	1.44	5/16	.34	0.94	2.63	2.00	0.25
988	2.03	1.19	1.38	5/16	.34	0.90	2.90	1.97	0.28
C9103	2.22	1.25	2.00	3/8	.41	1.25	3.00	2.66	0.31
F2 (Figure 2)									
C77	1.75	3.40	1.00	5/16	.36	.94	2.62	1.94	.25
C102.5	5.75	2.92	2.00	3/8	.44	1.13	7.12	3.07	.31
C111	6.38	3.00	2.00	3/8	.44	1.13	7.75	3.00	.34
C111 (SPECIAL)	6.38	3.00	2.00	3/8	.44	1.13	7.75	3.00	.34
C131	4.69	2.13	1.69	3/8	.44	.94	6.12	2.75	.44
C188	2.00	1.38	1.50	5/16	.34	.94	2.75	2.18	.31

Note: Links with attachments on only one side are made right- and left-hand.

① Style of hole, round.

② Furnished cottered only at attachment links.

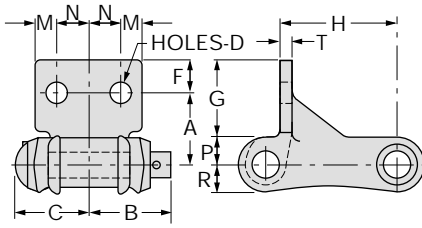
③ Style of hole, square.

④ No's. C720S- and 720S-F2 have 2 additional holes 1.94 inches apart and 1.31 inches above first line of holes. Attachments face toward open end of link.

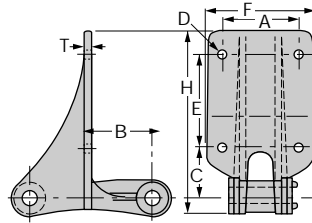
⑤ Attachment face for these chains has cloverleaf outline instead of rectangular.

⑥ No. A730-F2 has 2 additional holes 2 inches apart and 1.31 inches above first line of holes. Attachment faces toward open end of link.

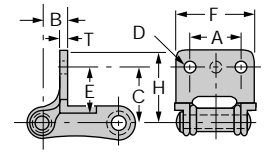
CAST CHAINS – Attachments



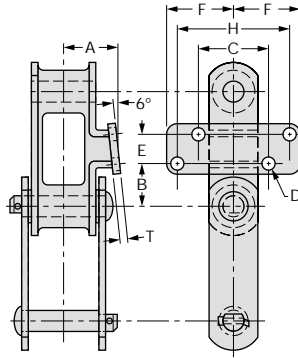
F8



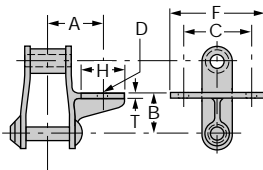
F26, F28



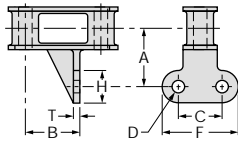
F28, F29



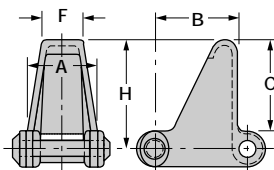
G6



G19 (Figure 1)



G19 (Figure 2)



H2

Dimensions are in inches.

Chain Number	A	B	C	D ^①		E	F	H	T
				Bolt Dia.	Bolt Hole				
F8									
4124	2.94	–	2.19	1/2	.56	1.31	5.00	3.88	.50
F26									
720S	3.75	3.00	2.38	3/8	.41	2.63	5.38	6.75	0.25
C720	3.75	3.00	2.38	3/8	.41	2.63	5.38	6.75	0.25
CS720S	3.75	3.00	2.38	3/8	.41	2.63	5.38	6.75	0.25
F28									
720CS	3.75	3.00	2.38	3/8	.41	4.50	5.38	8.84	0.25
C720	3.75	3.00	2.38	3/8	.41	4.50	5.50	8.88	0.25
CS720S	3.75	3.00	2.38	3/8	.41	4.50	5.38	8.84	0.25
CS730	3.75	3.00	2.38	3/8	.41	4.50	5.38	8.31	0.25
F29									
C9103	2.22	0.44	2.00	3/8	.41	1.25	3.06	2.66	0.41
SCA9103	2.72	2.63	2.00	3/8	.41	N/A	3.06	2.66	0.38
F30									
C9103	2.22	0.63	2.00	1/2	.56	1.25	3.25	2.63	0.34
G6^②									
C102.5	2.62	1.59	2.06	3/8	.41	.88	2.31	3.50	.25
C131	2.19	1.26	1.68	3/8	.44	.56	2.03	3.06	.28
C188	1.60	1.03	1.68	3/8	.44	.56	1.91	3.06	.25
G19 (Figure 1)									
H78	2.19	1.63	2.63	3/8	.41	–	3.50	1.25	0.25
G19 (Figure 2)									
C55	1.69	1.04	.88	5/16	.34	–	1.75	1.00	–
C131	2.39	2.01	2.88	3/8	.44	–	3.88	1.00	.28
C188	1.94	1.86	1.50	3/8	.41	–	2.88	1.25	.25

Chain Number	A	B	C	D	E	F	H	T
H2								
H78	2.38	2.31	2.94	–	–	1.06	3.50	–

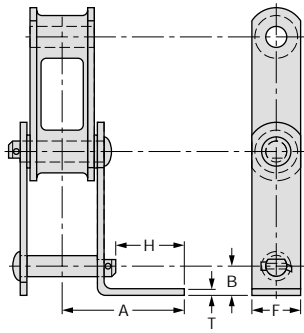
Note: Links with attachments on only one side are made right- and left-hand.

① Style of hole, round.

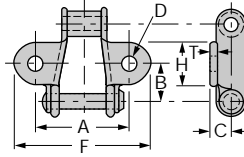
② Right-hand attachment shown. Left-hand also available.

Note: Dimensions are subject to change. Certified dimensions of ordered material are furnished upon request.

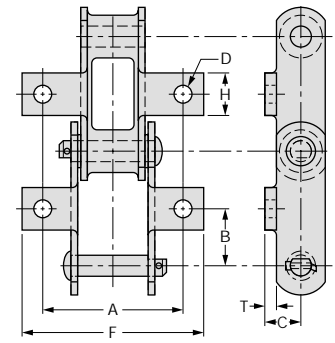
CAST CHAINS – Attachments



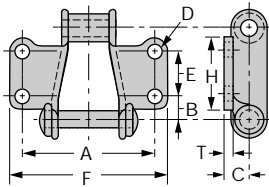
G27



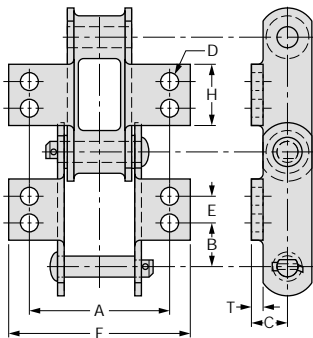
K1 (Figure 1)



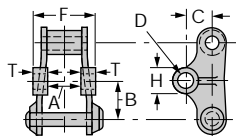
K1 (Figure 2)



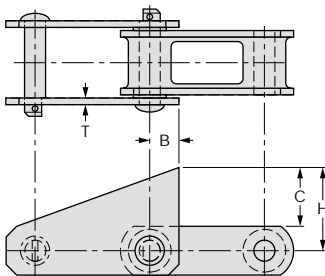
K2 (Figure 1)



K2 (Figure 2), K3



M1



S1

Dimensions are in inches.

Chain Number	A	B	C	D ^①		E	F	H	T
				Bolt Dia.	Bolt Hole				
G27									
C188	3.32	0.88	—	—	—	—	1.12	1.89	0.25
K1 (Figure 1)									
H78	4.00	1.25	0.81	3/8	0.41 ^②	—	5.00	1.38	0.22
952	2.13	0.69	0.44	3/16	0.22 ^②	—	2.88	0.75	0.16
955	2.00	0.78	0.44	1/4	0.28 ^②	—	2.88	0.81	0.16
962	2.38	0.78	0.44	1/4	0.28	—	3.28	0.97	0.19
977	3.00	1.16	0.66	1/4	0.28 ^③	—	3.88	1.31	0.16
988	3.81	1.31	0.66	5/16	0.34	—	4.69	1.38	0.19
C9103	4.19	1.50	0.81	3/8	0.41 ^③	—	5.44	1.72	0.22
K1 (Figure 2)									
C55	2.04	0.82	0.50	1/4	0.31	—	2.92	0.82	0.16
C77	3.00	1.15	0.66	3/8	0.41	—	4.13	1.12	0.22
C131	4.12	1.54	1.00	3/8	0.44	—	5.50	1.50	0.38 ^④
C188	3.75	1.31	0.81	3/8	0.44	—	5.06	1.19	0.25
K2 (Figure 1)									
H78	4.00	0.41	0.81	3/8	0.41	1.13	5.00	2.13	0.25
988	3.63	0.66	0.66	5/16	0.34	1.25	4.50	2.13	0.19
K2 (Figure 2)									
C102B	5.32	1.12	1.00	3/8	0.41	1.75	6.57	2.88	0.38 ^④
C110	5.32	2.12	1.00	3/8	0.41	1.75	6.64	2.88	0.38 ^④
C111	6.25	1.22	1.13	1/2	0.53	2.31	7.50	3.50	0.38 ^④
C131	4.12	0.79	1.00	1/2	0.53	1.50	5.25	2.50	0.38 ^④
C132	7.50	1.65	1.25	1/2	0.53	2.75	9.36	4.00	0.50
C188	4.18	0.68	.81	5/16	0.34	1.25	5.10	2.12	0.25
4124	5.00	1.13	1.19	3/8	0.44	1.81	6.26	3.13	0.28
K3									
C102.5	5.31	1.14	1.19	1/2	0.53	1.75	6.55	2.88	0.50
M1									
720S	1.50	3.00	1.50	3/4	0.81	—	3.00	1.50	0.75
C720	1.50	3.00	1.50	3/4	0.81	—	3.00	1.50	0.75
S1									
C102B	—	0.83	3.00	—	—	—	—	3.75	0.38
C102.5	—	1.01	2.88	—	—	—	—	3.87	0.38
C111	—	0.86	3.50	—	—	—	—	4.38	0.38
C111 W2	—	0.86	3.50	—	—	—	—	4.38	0.38
C132	—	1.13	4.00	—	—	—	—	5.00	0.50
C132 W1	—	1.13	4.00	—	—	—	—	5.00	0.50
C132 W2	—	1.13	4.00	—	—	—	—	5.00	0.50

Note: Links with attachments on only one side are made right- and left-hand.

- ① Style of hole, round. (Unless otherwise noted.)
- ② Style of hole, round countersunk.
- ③ Style of hole, square.
- ④ Steel sidebar. Centerlink attachment is .25".
- ⑤ Steel sidebar. Centerlink attachment is .22".
- ⑥ Steel sidebar. Centerlink attachment is .31".