

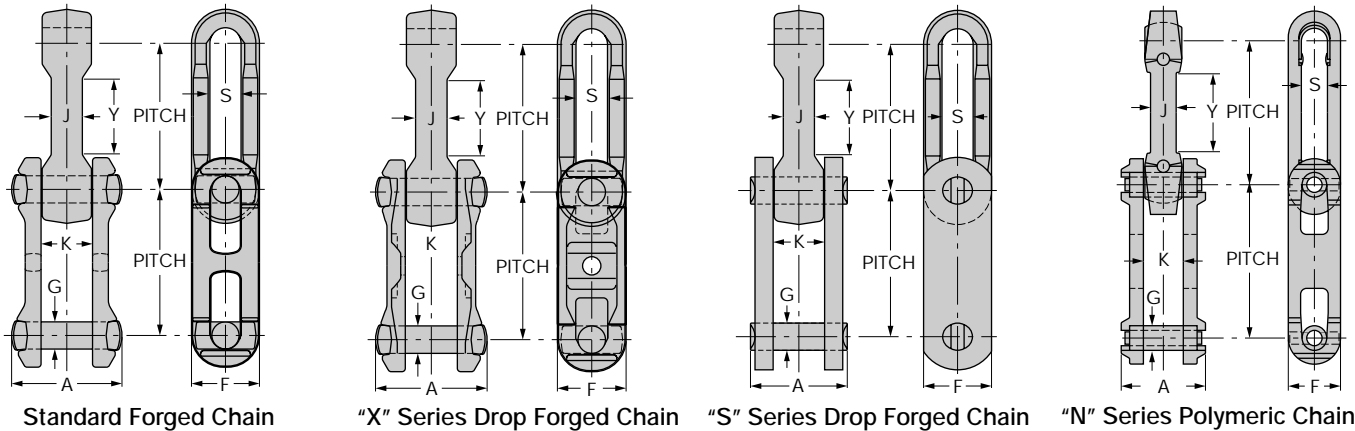
■ DROP FORGED

Standard Forged Chain combines the strength and relatively light weight to make it a good choice for use with trolley, scraper flight and assembly conveyors. All forged construction with thru-hardened links and pins assures long life.

X Series Chain flexes both horizontally and vertically, which makes it ideal for overhead conveyors with vertical curves.

S Series Chain features a thru-hardened forged block link, induction hardened steel outer sidebars and induction hardened staked rivets for greater wear resistance, higher system tensions, and positive rivet retention.

N348 is used primarily for overhead conveyor service where corrosion is a concern. Polymeric links and stainless steel pins of N348 resist corrosion.



Dimensions are in inches. Strengths, loads and weights are in pounds.

Rex Chain No.	Average Pitch	Pins		Overall Width	K	Chain Height		S	Rated Working Load	Average Weight	Chain Part	Brinell Hardness	Average Ultimate Strength	Sprocket Unit No. ①
		G	A			F	J							
STANDARD FORGED CHAIN														
468	4.031	0.75	3.31	1.69	1.88	1.13	0.88	5,800	7.8		Side Link Center Link Pin	311/388 331/388 340/415	88,000	468
698 ^②	6.031	1.13	3.75	1.63	2.59	1.00	1.25	10,800	12.5		Side Link Center Link Pin	311/388 331/388 340/415	175,000	698
998 ^②	9.031	1.13	3.75	1.69	2.66	1.00	1.25	10,800	10.3		Side Link Center Link Pin	311/388 331/388 340/415	175,000	998
9118	9.031	1.38	4.88	2.13	3.00	1.31	1.50	18,300	16.3		Side Link Center Link Pin	302/363 302/363 311/363	1250,000	9118 ^②
"X" SERIES DROP FORGED CHAIN														
X348	3.015	0.50	1.75	0.81	1.09	0.50	0.56	2,000	1.9		Side Link Center Link Pin	302/341 302/341 341/388	40,000	348
X458 ^③	4.031	0.63	2.19	1.06	1.38	0.63	0.69	4,000	3.1		Side Link Center Link Pin	311/388 331/388 363/415	57,000	458
X678 ^③	6.031	0.88	3.03	1.38	2.00	0.81	1.00	7,100	6.5		Side Link Center Link Pin	311/388 331/388 340/415	125,000	678
"S" SERIES DROP FORGED CHAIN														
S348	3.019	0.50	1.75	0.81	1.13	0.50	0.56	2,000	2.4					348
S458	4.031	0.63	2.06	1.06	1.38	0.63	0.69	4,000	3.5					458
S468	4.031	0.75	2.94	1.69	2.00	1.13	0.88	6,700	7.9					468
S678	6.031	0.88	3.00	1.44	2.00	0.81	1.00	7,700	8.6					678
S698	6.031	1.13	3.25	1.63	2.50	1.00	1.25	10,800	11.7					698
S698HD	6.031	1.13	3.88	1.63	2.88	1.00	1.25	13,000	12.2					698
S998	9.031	1.13	3.25	1.69	2.50	1.00	1.25	10,800	12.1					998
S9118	9.031	1.38	4.38	2.13	3.00	1.31	1.50	18,300	23.3					9118 ^②
"N" SERIES POLYMERIC CHAIN														
N348	3.015	0.50	1.75	0.81	1.09	0.50	0.50	700	0.6					348

① Cast or fabricated sprockets may be used.

② Available only as a fabricated sprocket.

③ Available with 8642 alloy steel. Increases hardness and ultimate strength. Contact Rexnord.

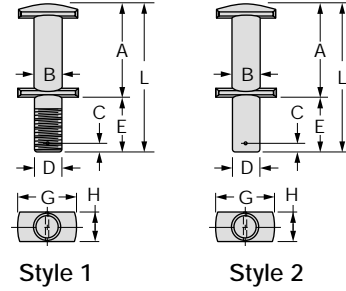
Note: Dimensions are subject to change. Certified dimensions of ordered material are furnished upon request.

■ DROP FORGED – Attachments

CHAIN NUMBER	ATTACHMENTS AVAILABLE*
S348, X348	A53, S2
S458, X458	A22, A52, F2A, M9, M37, M40, S22, extended pin
468, S468	F2A, F2C, S2, extended pin
X658	
S678, X678	A22, A53, F2C, F2F, G47, K2, extended pin
698, S698	A53, A54, F2D, G2-2A, extended pin
998, S998	A42, F2A, G1B, S2A, S22, extended pin
9118, S9118	S22

*Bold face type indicates attachments normally carried in stock.

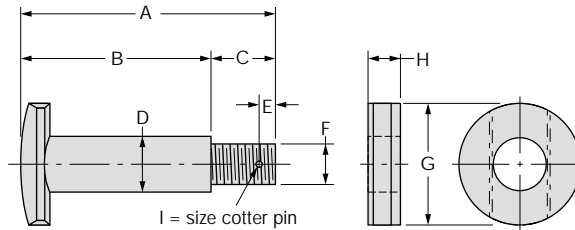
ATTACHMENT PINS



Dimensions are in inches. Strengths, loads and weights are in pounds.

Chain Number	Style	A	B	C ^①	D	E ^②	F	G	H	Extension (Diameter)
X348	1	B + C	1.72	1.00-2.00	0.50	0.25	0.50	1.19	0.50	0.50 Threaded
458	1	B + C	2.20	1.13-2.63	0.63	0.25	0.50	1.22	0.63	0.50 Threaded
458	1 or 2	B + C	2.20	2.00-5.50	0.63	0.25	0.63	1.22	0.63	0.63 Threaded or Plain
468	1 or 2	B + C	3.19	1.38-2.63	0.75	–	0.75	1.69	0.77	0.75 Threaded or Plain
468	1	B + C	3.19	1.50-5.50	0.75	–	0.63	1.69	0.77	0.63 Threaded
678	1 or 2	B + C	3.00	1.00-3.00	0.88	0.25	0.63	1.88	0.88	0.63 Threaded or Plain
678	1	B + C	3.00	1.00-1.50	0.88	0.25	0.75	1.88	0.88	0.75 Threaded
678	1	B + C	3.00	1.50-2.25	0.88	–	0.88	1.88	0.88	0.88 Threaded
698, 998	1 or 2	B + C	3.88	2.00	1.13	0.50	0.75	2.50	1.16	0.75 Threaded or Plain
698, 998	1 or 2	B + C	3.80	2.00	1.13	0.31	1.13	2.50	1.13	1.13 Threaded or Plain
9118	1 or 2	7.38	4.88	2.50	1.38	0.50	1.13	3.00	1.44	1.13 Threaded or Plain
9118	1 or 2	7.38	4.88	2.50	1.38	0.50	1.38	3.00	1.44	1.38 Threaded or Plain

COUPLING PINS AND WASHERS



Bolted Coupler Pin

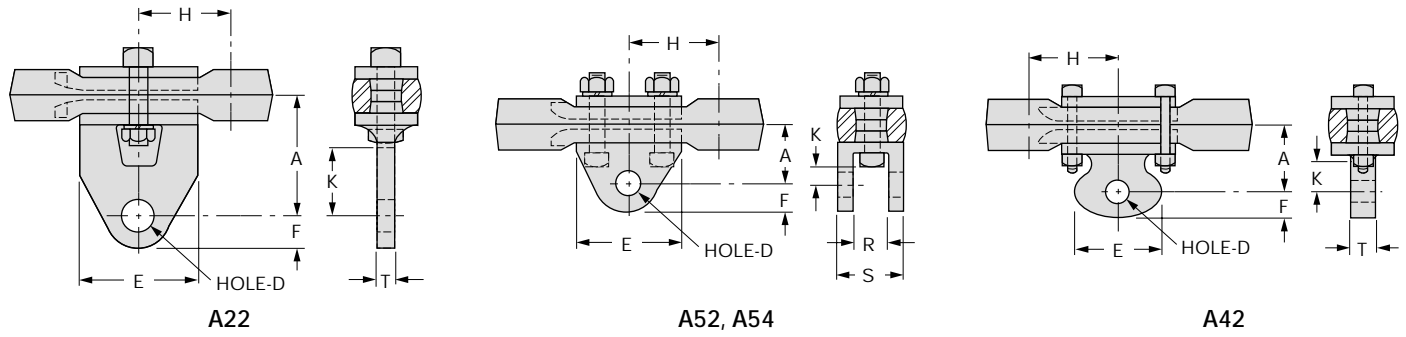
Available for all rivetless chains.

Dimensions are in inches. Strengths, loads and weights are in pounds.

Chain Number	A	B	C	D	E	F	G	H	I Cotter Size	Extension (Dia.)	Average Weight
X348	2.31	1.5	.81	0.5	0.16	0.38	1.00	0.27	0.13	0.38 dia. threaded	0.20
458	2.88	1.89	.98	0.63	0.30	0.50	1.25	0.28	0.13	0.50 dia. threaded	0.38
468	3.97	2.88	1.09	0.75	0.19	0.63	1.56	0.39	0.13	0.63 dia. threaded	0.75
X678	3.91	2.94	.97	0.88	0.25	0.63	1.88	0.50	0.13	0.63 dia. threaded	0.94
698	4.92	3.81	1.11	1.13	0.27	0.75	2.38	0.63	0.13	0.75 dia. threaded	2.00
998	4.92	3.81	1.11	1.13	0.27	0.75	2.38	0.63	0.13	0.75 dia. threaded	2.00
9118	6.09	4.97	1.13	1.38	0.25	1.00	3.00	0.69	0.19	1.00 dia. threaded	4.00

■ DROP FORGED – Attachments

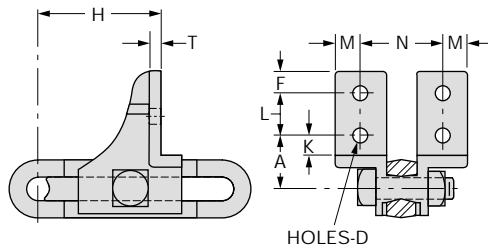
A ATTACHMENTS



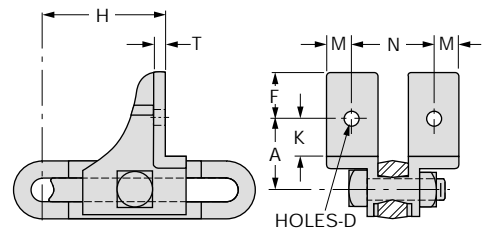
Dimensions are in inches. Strengths, loads and weights are in pounds.

Attachment No.	Chain Number	A	D	E	F	H	K	R	S	T	Average Weight
A22	X458, S458	2.00	0.68	2.38	0.81	2.02	1.06	–	–	0.50	1.5
	X678, S678	2.84	0.66	3.63	0.75	3.00	1.50	–	–	0.53	3.1
A42	998, S998	2.75	0.91	4.00	0.94	4.50	1.63	–	–	1.06	6.9
A52	X458, S458	2.88	0.53	2.25	0.63	2.00	1.88	0.69	1.19	–	1.6
A53	X348, S348	2.50	0.53	1.59	0.63	1.50	1.75	0.56	0.94	–	0.6
	X678, S678	2.25	0.66	3.56	0.88	3.00	1.09	1.13	1.88	–	2.8
A54	698, S698	2.75	0.91	4.00	0.94	3.00	1.06	1.44	2.38	–	6.0
	698, S698	2.50	0.66	2.97	0.88	3.00	1.13	1.13	2.00	–	4.0

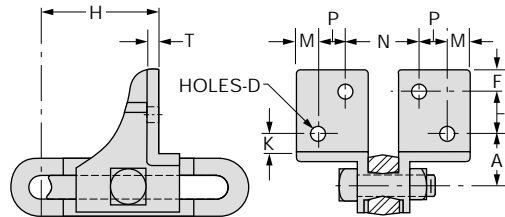
F ATTACHMENTS



F2A and F2D
Figure 1



F2A and F2C
Figure 2



F2C and F2F
Figure 3

Dimensions are in inches. Strengths, loads and weights are in pounds.

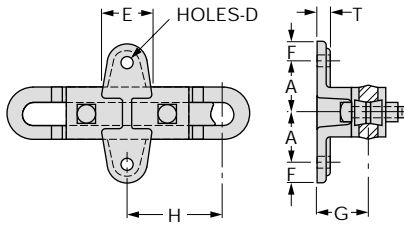
Attachment No.	Chain Number	A	D	F	H	K	L	M	N	P	T	Average Weight
F2A Figure 1	998, S998	2.02	0.56	0.63	6.00	0.75	2.00	0.88	6.00	–	0.38	9.1
F2A Figure 3	X458, S458	1.94	0.56	0.94	3.22	0.94	–	0.75	3.63	–	0.25	2.2
	468, S468	1.97	0.56	0.75	2.78	1.00	–	0.94	4.00	–	0.31	2.5
F2C Figure 3	X678, S678	1.94	0.56	0.81	4.69	0.88	1.38	0.69	2.56	0.88	0.31	4.7
F2C Figure 2	468, S468	1.97	0.56	0.88	2.91	1.00	–	0.75	3.94	–	0.25	2.4
F2D	698, S698	2.03	0.56	0.75	4.34	0.75	2.00	1.00	3.94	–	0.34	5.9
F2F	X678, S678	1.94	0.56	0.63	4.69	0.88	1.25	0.81	2.06	1.06	0.38	4.4

Note: Dimensions are subject to change. Certified dimensions of ordered material are furnished upon request.

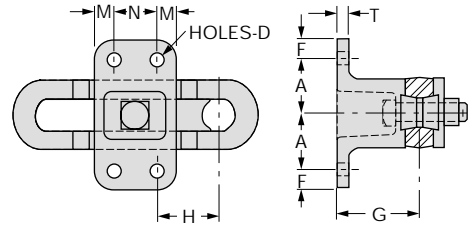
■ DROP FORGED – Attachments

G ATTACHMENTS

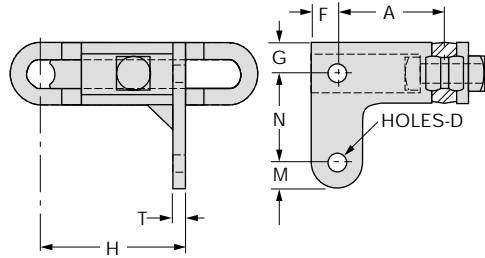
DROP FORGED CHAINS



G1B



G2-2A

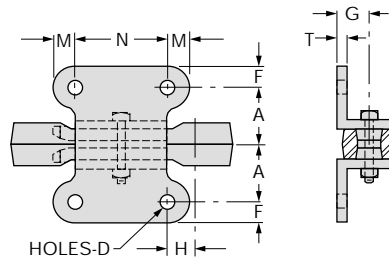


G47

Dimensions are in inches. Strengths, loads and weights are in pounds.

Attachment No.	Chain Number	A	D	F	G	H	M	N	T	Average Weight
G1B	998, S998	2.50	0.69	1.00	2.94	2.53	1.00	4.00	0.38	11.2
G2-2A	698, S698	2.00	0.56	0.75	4.00	1.44	0.75	3.25	0.38	7.4
G47	X678, S678	3.50	0.56	0.88	1.00	4.81	0.88	3.00	0.38	5.2

K ATTACHMENTS

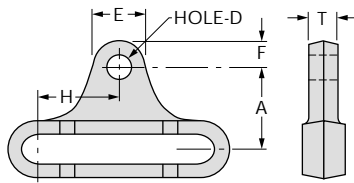


Dimensions are in inches. Strengths, loads and weights are in pounds.

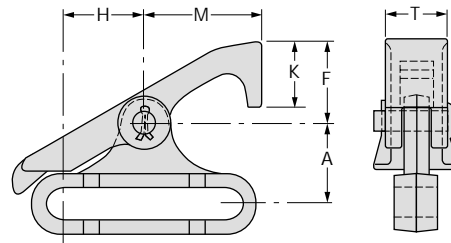
Attachment No.	Chain Number	A	D	F	G	H	M	N	T	Average Weight
K2	X678, S678	1.75	0.56	0.75	1.38	1.50	0.75	3.00	0.38	3.9

■ DROP FORGED – Attachments

M ATTACHMENTS



M37, M40

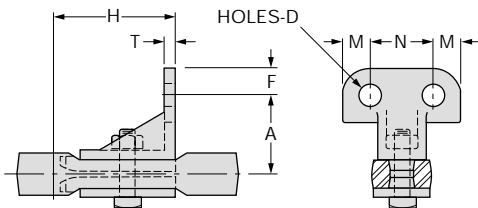


M40 attachment with pusher dog #1

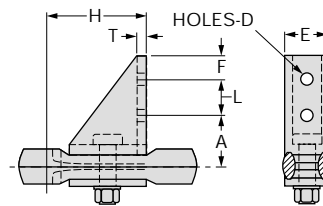
Dimensions are in inches. Strengths, loads and weights are in pounds.

Attachment No.	Chain Number	A	D	F	G	H	M	N	T	Average Weight
M37	X458, S458	2	0.77	1.13	0.56	2	–	–	0.45	1.3
M40	X458, S458	2	0.53	1.13	0.56	2	–	–	0.45	1.3
M40 with pusher dog	X458, S458	2	–	–	2	2	1.63	2.81	1.38	3.1

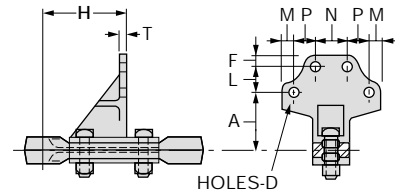
S ATTACHMENTS



S2



S22



S2A

Dimensions are in inches. Strengths, loads and weights are in pounds.

Attachment No.	Chain Number	A	D	E	F	H	L	M	N	P	T	Average Weight
S2	X348, S348	2.19	0.41	–	0.63	2.25	–	0.44	2.63	–	0.25	0.8
	468, S468	2.69	0.56	–	0.75	2.91	–	0.75	1.50	–	0.31	1.9
S2A	998, S998	4.00	0.56	–	0.75	5.28	1.75	0.75	2.13	1.53	0.31	8.8
S22	X458, S458	2.25	0.56	1.38	0.63	3.19	2.00	–	–	–	0.31	2.0
	X678, S678	2.88	0.69	1.81	0.88	4.94	2.25	–	–	–	0.31	4.7
	998, S998	3.25	0.81	2.38	1.50	6.50	3.00	–	–	–	0.63	11
	9118, S9118	4.25	0.81	3.00	1.25	7.19	6.50	–	–	–	0.38	15

Note: Dimensions are subject to change. Certified dimensions of ordered material are furnished upon request.